

Łukasiewicz
Institute of Aviation

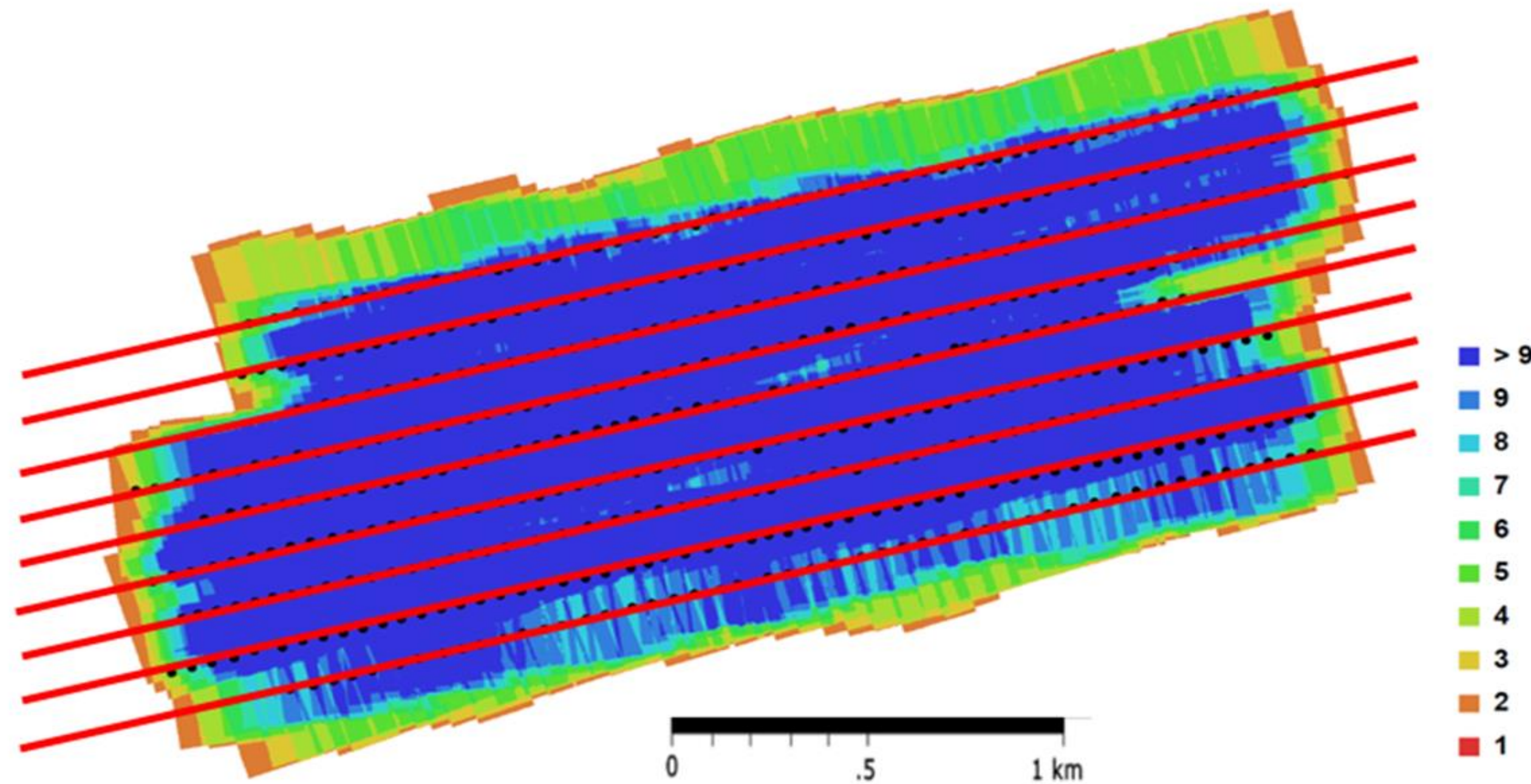
Space applications adoption by regional authorities



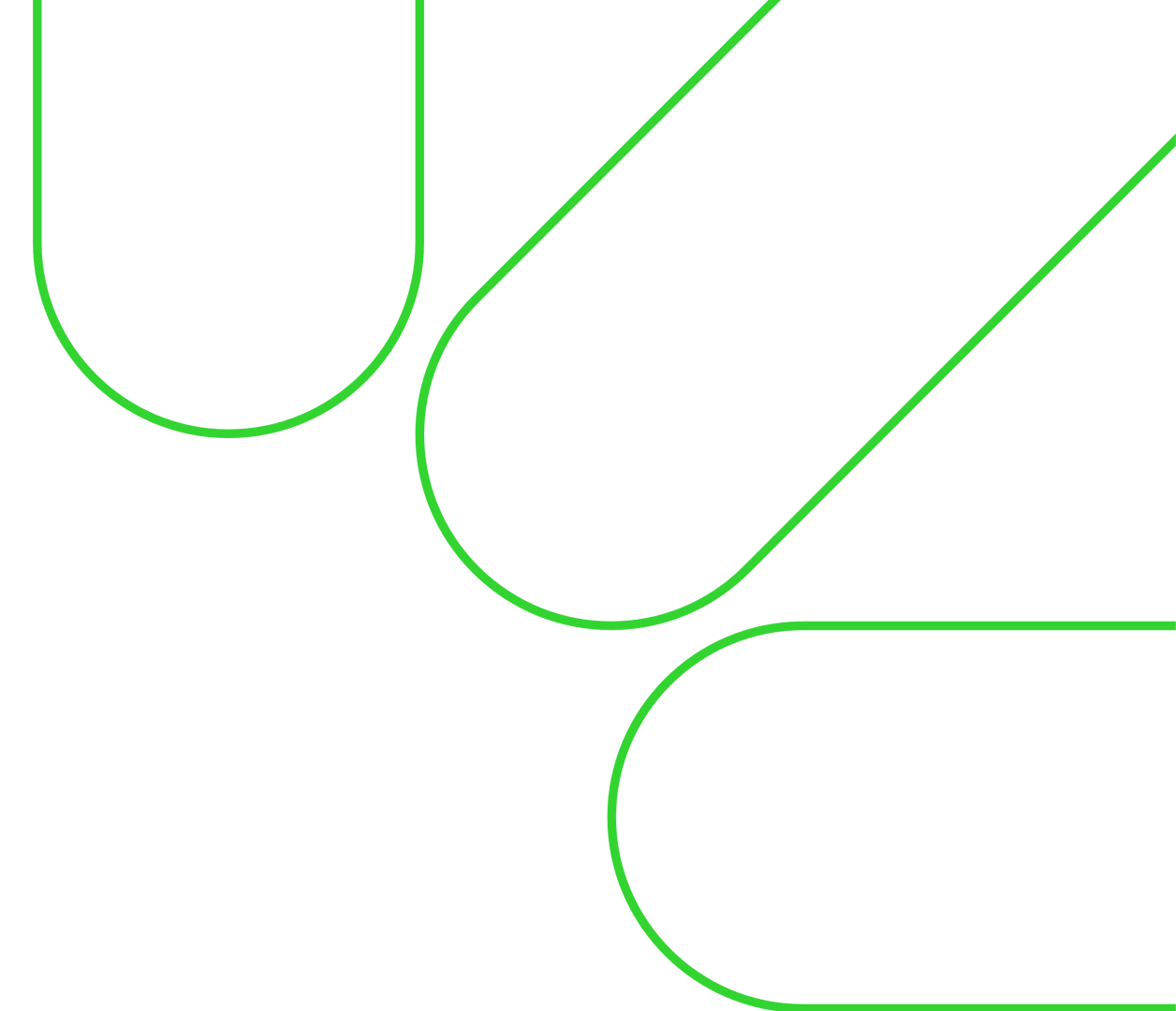
*The food, construction and transport sectors have
the greatest impact on the natural environment*

<https://ec.europa.eu>

Number of images: 467
Flying altitude: 855 m
Ground resolution: 0.25 m/pix
Coverage area: 2.5 sq km
Camera stations: 467
Tie-points: 51330
Error: 0.9 pix

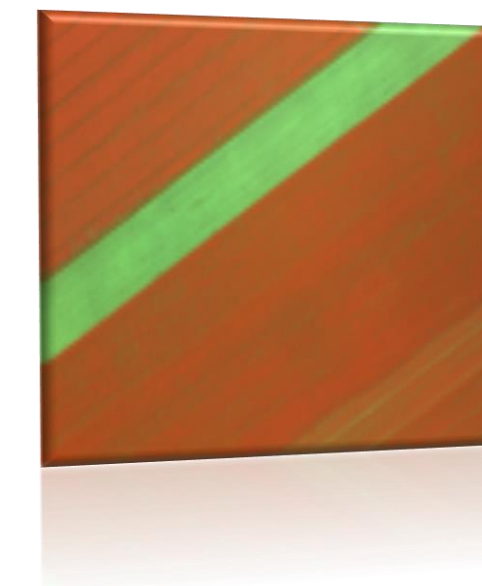
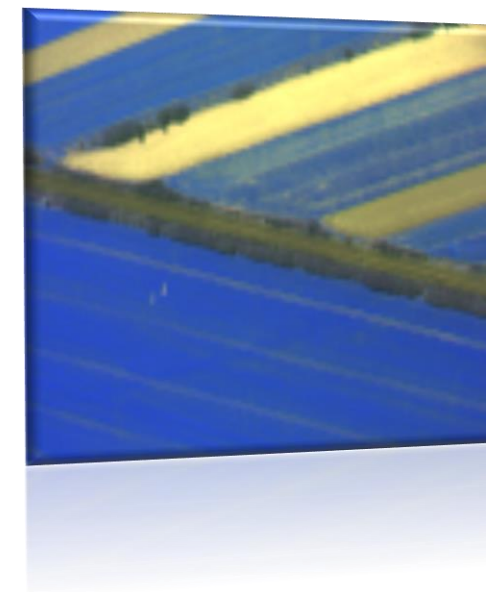
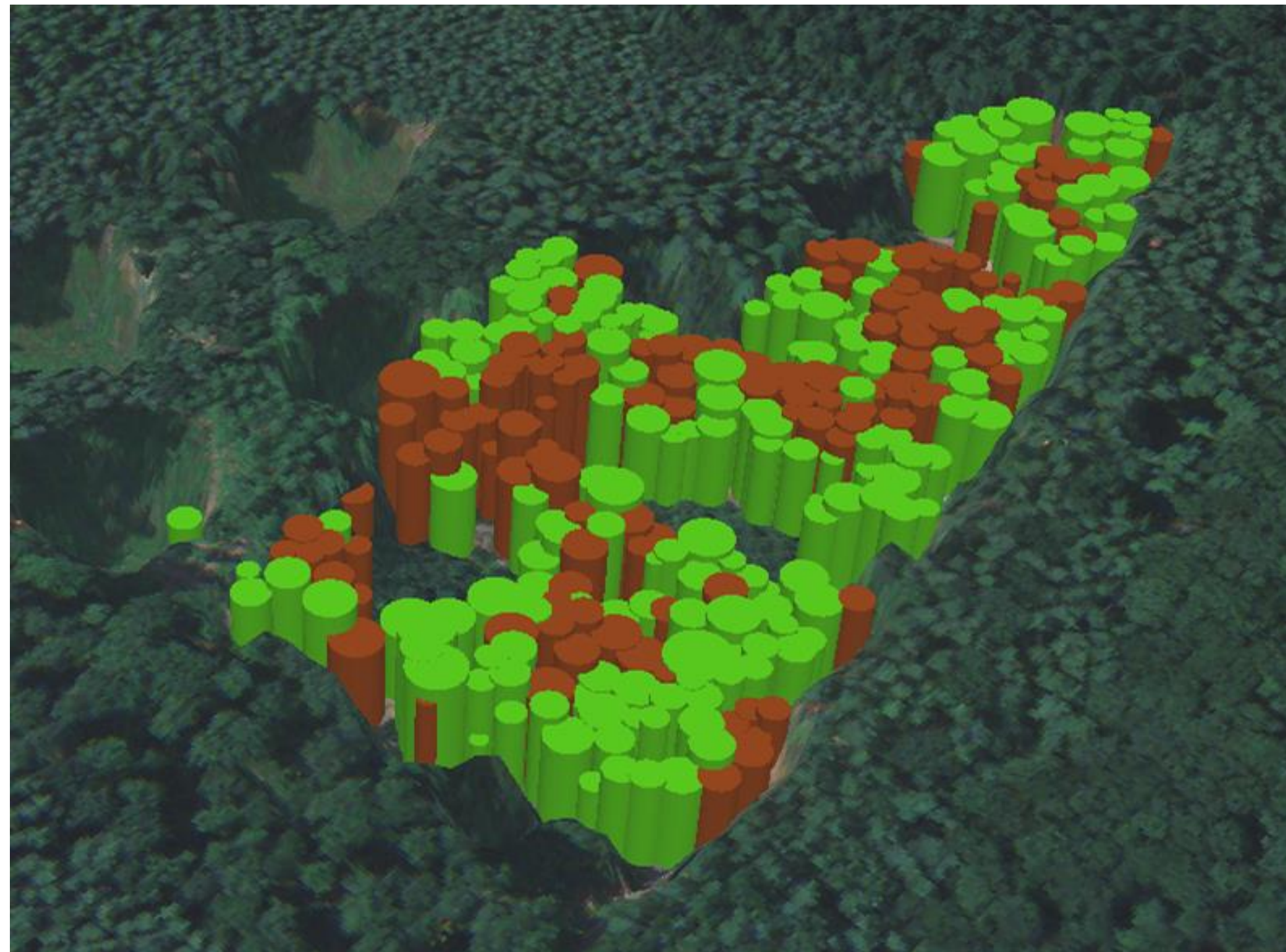


*2,5 km²
40 mins*



Use of Satellite Data for Crop Management

Use of remote sensing data to obtain precise information about vegetation and the necessary fertilization



Agriculture 4.0 - the agriculture of the future

**Development and implementation of new e-services and applications
for the agricultural sector with the use of remote sensing data**



- Warstwy
- Ortofotomapa
- Ignaców NDVI
- Oleśnik NDVI
- Inne
- Punkty



Cooperation with Marshal's Office of the Mazowieckie Voivodeship in Warsaw

1 km



Warstwy
Ortofotomapa
Warstwice

Ignaców
Hi-Res Orto

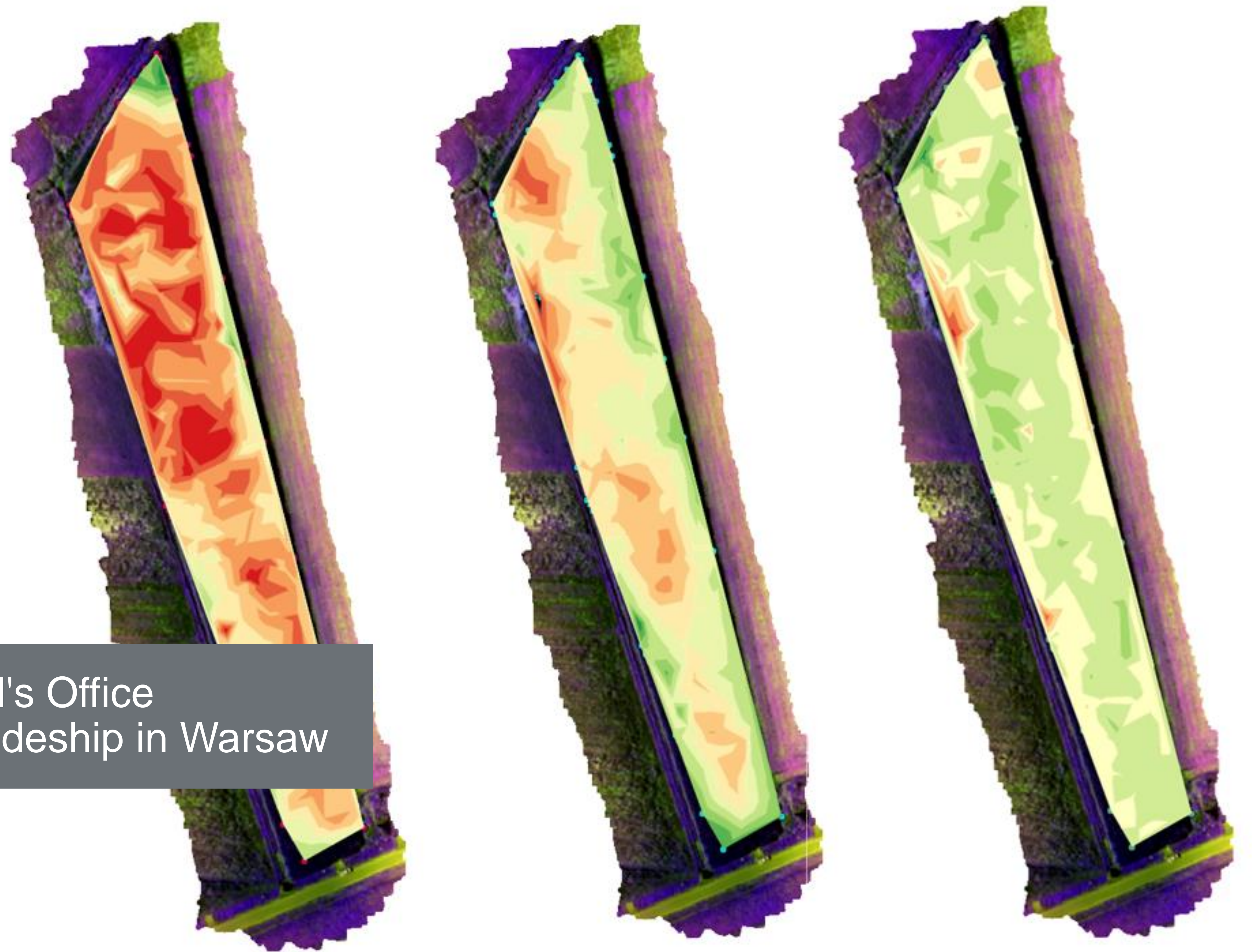
Oleśnik
NDVI

Inne

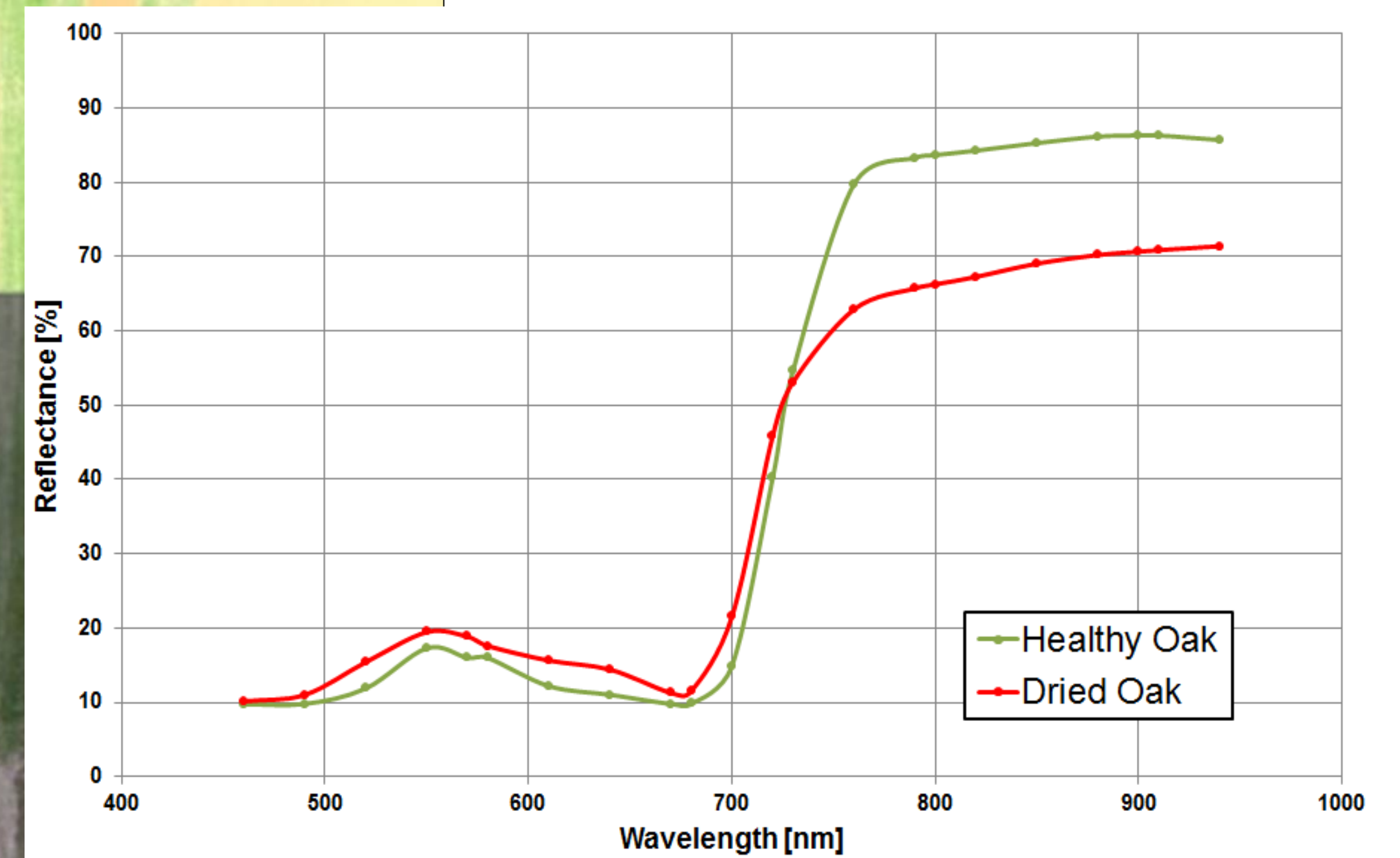
Punkty
Pierwiastki
całkowite

Nr próbki		I_72	
Li [mg/kg]	2.50993	Ba [mg/kg]	39.1112
Be [mg/kg]	0.166336	La [mg/kg]	9.20804
V [mg/kg]	7.45531	Ce [mg/kg]	18.7214
Cr [mg/kg]	5.81927	Eu [mg/kg]	0.198610
Mn [mg/kg]	170.668	Gd [mg/kg]	1.21897
Co [mg/kg]	1.40765	Tl [mg/kg]	0.0719960
Ni [mg/kg]	2.82522	Pb [mg/kg]	17.1648
Cu [mg/kg]	70.1986	Bi [mg/kg]	0.0868918
Zn [mg/kg]	33.9374	Na [mg/kg]	45.0149
As [mg/kg]	2.57448	Mg [mg/kg]	593.031
Sr [mg/kg]	9.25770	Al [mg/kg]	3800.88
Mo [mg/kg]	0.136544	K [mg/kg]	615.169
Cd [mg/kg]	0.198610	Ca [mg/kg]	1834.91
Sn [mg/kg]	2.05809	Fe [mg/kg]	4389.79
Sb [mg/kg]	0.213505		

Cooperation with Marshal's Office
of the Mazowieckie Voivodeship in Warsaw



Cooperation with Marshal's Office
of the Mazowieckie Voivodeship in Warsaw



Terrain Mapping and Spectral Analysis

Szukaj miejsca lub nr działki

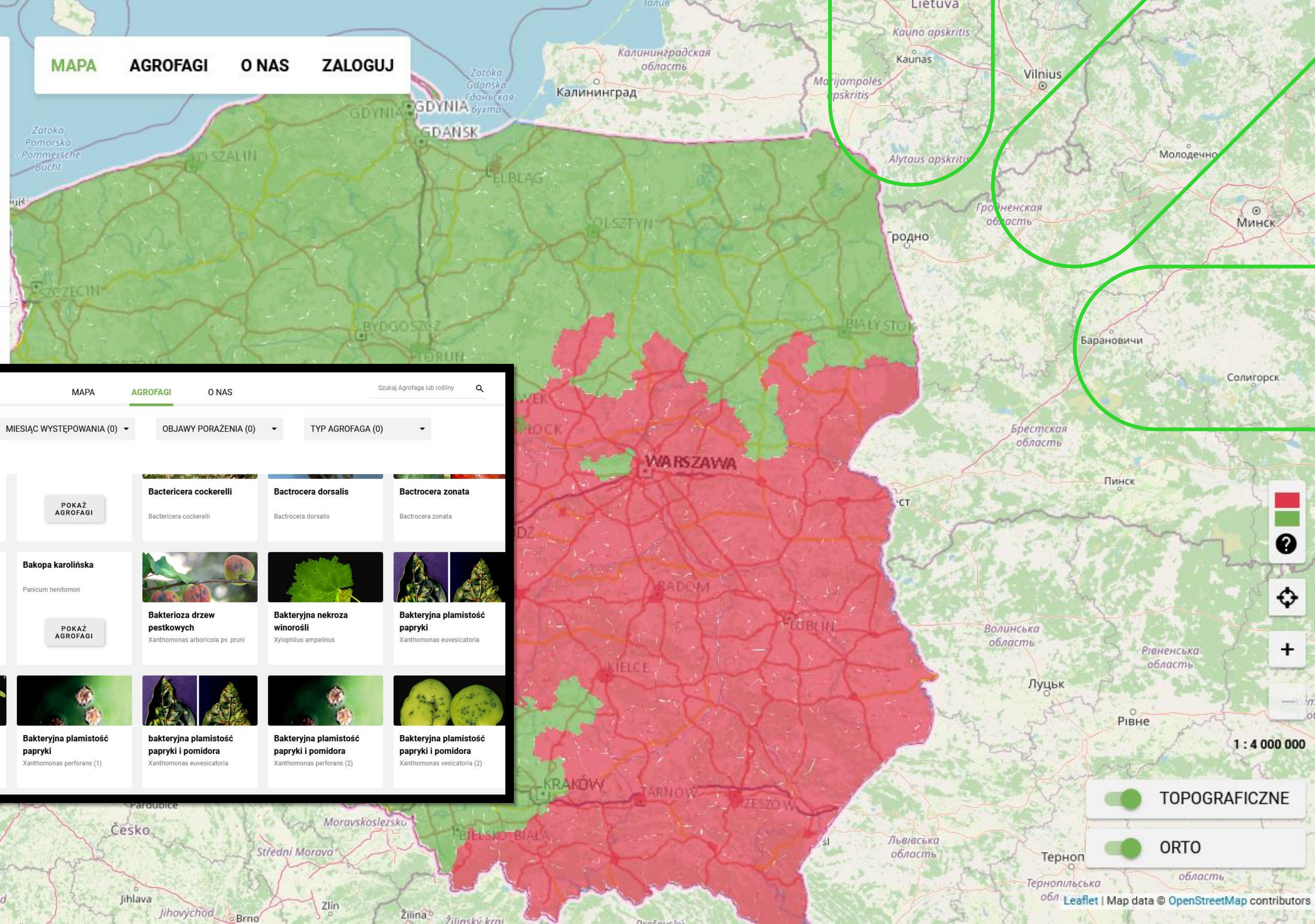


FITOEXPORT

MAPA AGROFAGI O NAS Szukaj Agrofaga lub rośliny

ROŚLINA ŻYWIELSKA (0) MIESIĄC WYSTĘPOWANIA (0) OBJAWY PORAZENIA (0) TYP AGROFAGA (0)

<p>POKAŻ AGROFAGI</p>	<p>POKAŻ AGROFAGI</p>	<p>POKAŻ AGROFAGI</p>	<p>Bactericera cockerelli</p> <p>Bactericera cockerelli</p>	<p>Bactrocera dorsalis</p> <p>Bactrocera dorsalis</p>	<p>Bactrocera zonata</p> <p>Bactrocera zonata</p>
<p>Bakopa karolińska</p> <p>Bacopa caroliniana</p>	<p>Bakopa karolińska</p> <p>Panicum henitomon</p>	<p>Bakterioza drzew pestkowych</p> <p>Xanthomonas arboricola pv. pruni</p>	<p>Bakteryjna nekroza winorośli</p> <p>Xylophilus ampelinus</p>	<p>Bakteryjna plamistość papryki</p> <p>Xanthomonas euvesicatoria</p>	
<p>Bakteryjna plamistość papryki</p> <p>Xanthomonas vesicatoria (1)</p>	<p>Bakteryjna plamistość papryki</p> <p>Xanthomonas gardneri (1)</p>	<p>Bakteryjna plamistość papryki</p> <p>Xanthomonas perforans (1)</p>	<p>bakteryjna plamistość papryki i pomidora</p> <p>Xanthomonas euvesicatoria</p>	<p>Bakteryjna plamistość papryki i pomidora</p> <p>Xanthomonas perforans (2)</p>	<p>Bakteryjna plamistość papryki i pomidora</p> <p>Xanthomonas vesicatoria (2)</p>



TOPOGRAFICZNE

ORTO

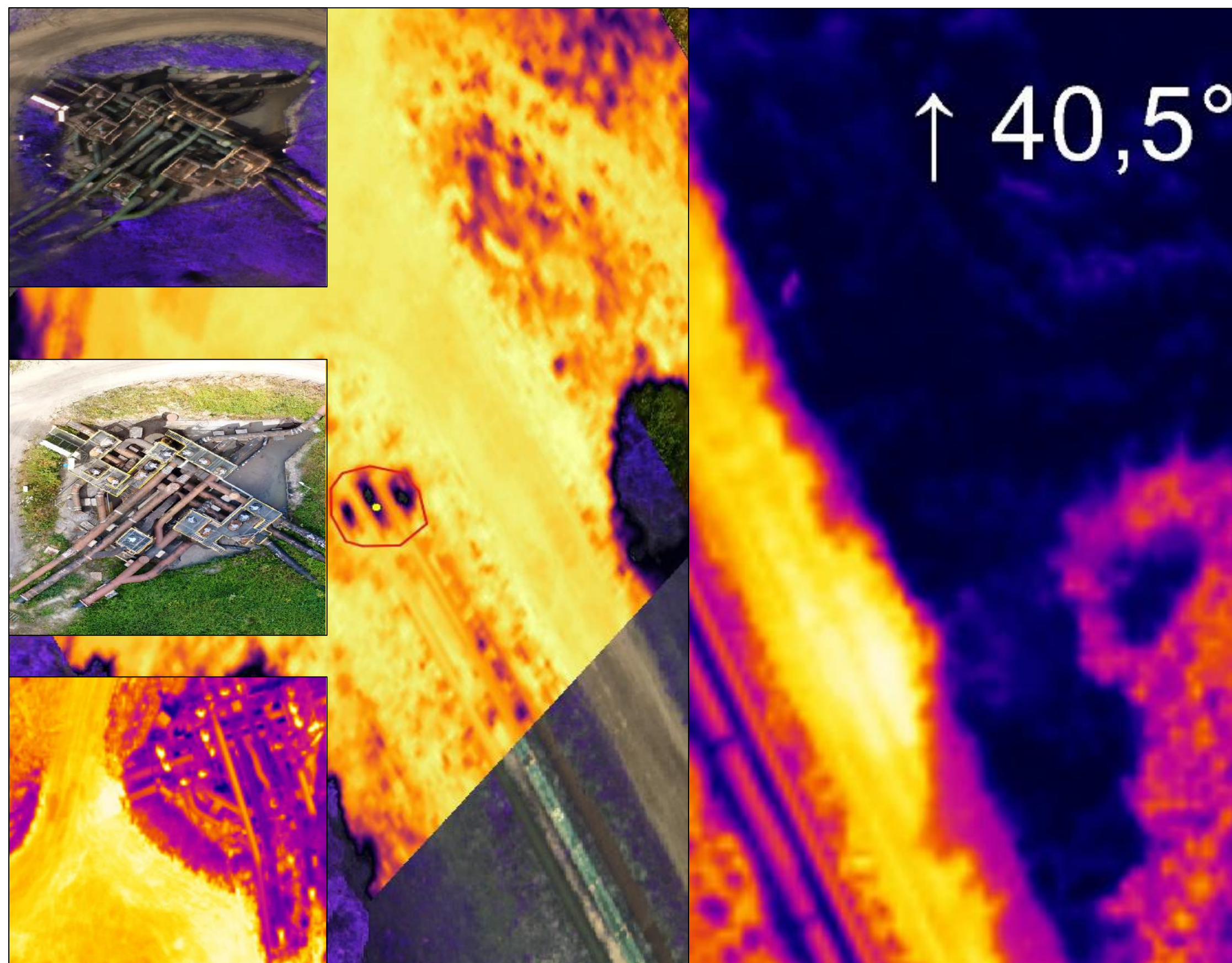
1 : 4 000 000

Use of Satellite/Aerial Data for Smart City Development

We are providing precise information about the city area (actual ortophotomaps) as the basis of intelligent management.

We generate precise photogrammetric products with the use of various types of data.





Thermograms

Map of water pollution



Łukasiewicz
Institute of Aviation

AL. KRAKOWSKA 110/114, 02-256 WARSAW, POLAND

+48 22 846 00 11 | ILOT@ILOT.LUKASIEWICZ.GOV.PL

ILOT.LUKASIEWICZ.GOV.PL

