



EUROPEAN UNION
SATELLITE CENTRE

Analysis for decision making



Gathering and analysing Users' Needs

Space 4 Critical Infrastructures Webinar:

Public Administration

23rd June 2022

Paula Saameno, EU SatCen (RTDI)



This project has received funding from the European Union's Horizon 2020 research and innovation programme under grant agreement No. 870330

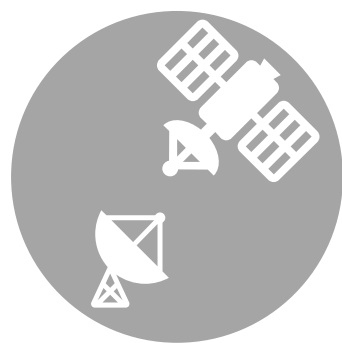
European Union Satellite Centre © 2022

Research, Technology Development and Innovation Unit

- The SatCen Research, Technology Development and Innovation Unit participates in several R&I projects with the objective of implementing new operational solutions to enhance SatCen operational services.
- One of the ongoing projects is ENTRUSTED, focused on providing the user perspective to the definition of the future secure Satellite Communication (SatCom) services for EU governmental users (GOVSATCOM).



Cooperation



EU Initiatives



Innovative Tech



EO Applications



New Security

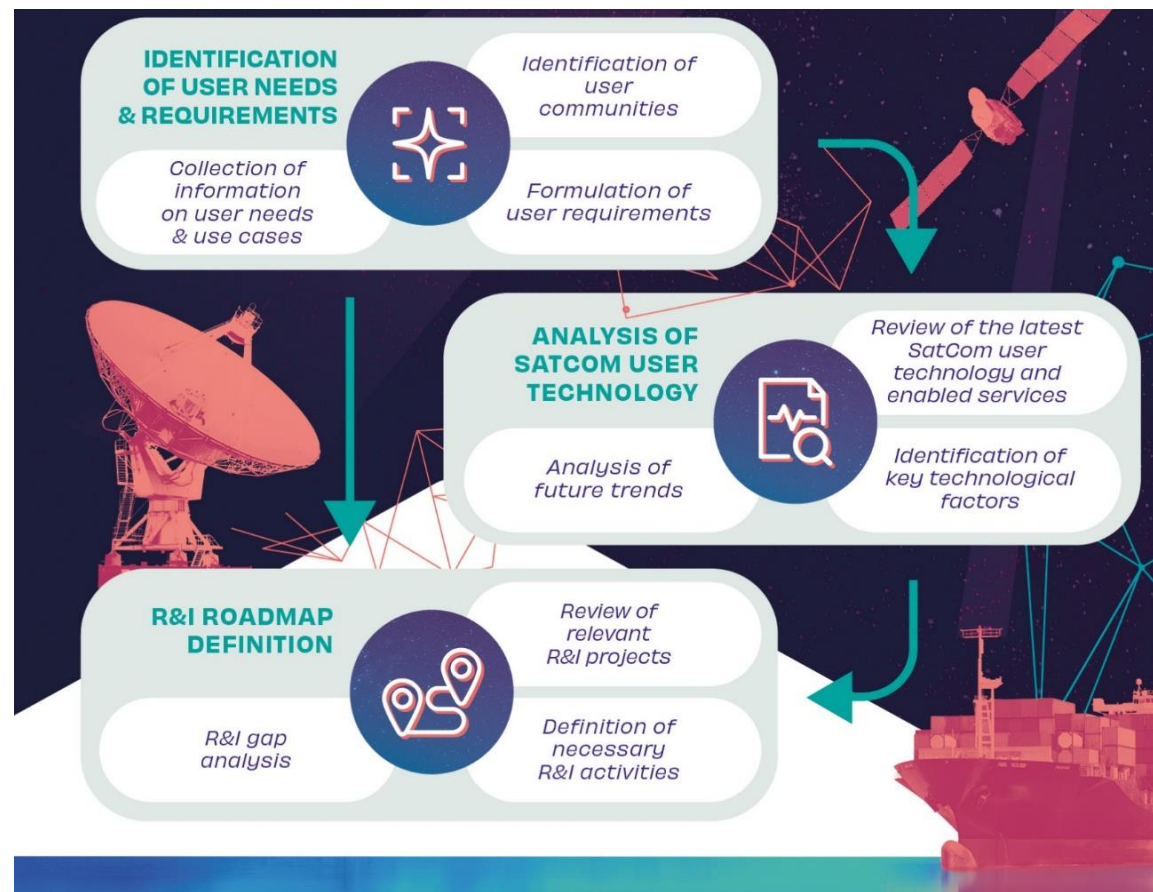


This project has received funding from the European Union's Horizon 2020 research and innovation programme under grant agreement No. 870330



ENTRUSTED Project Objectives

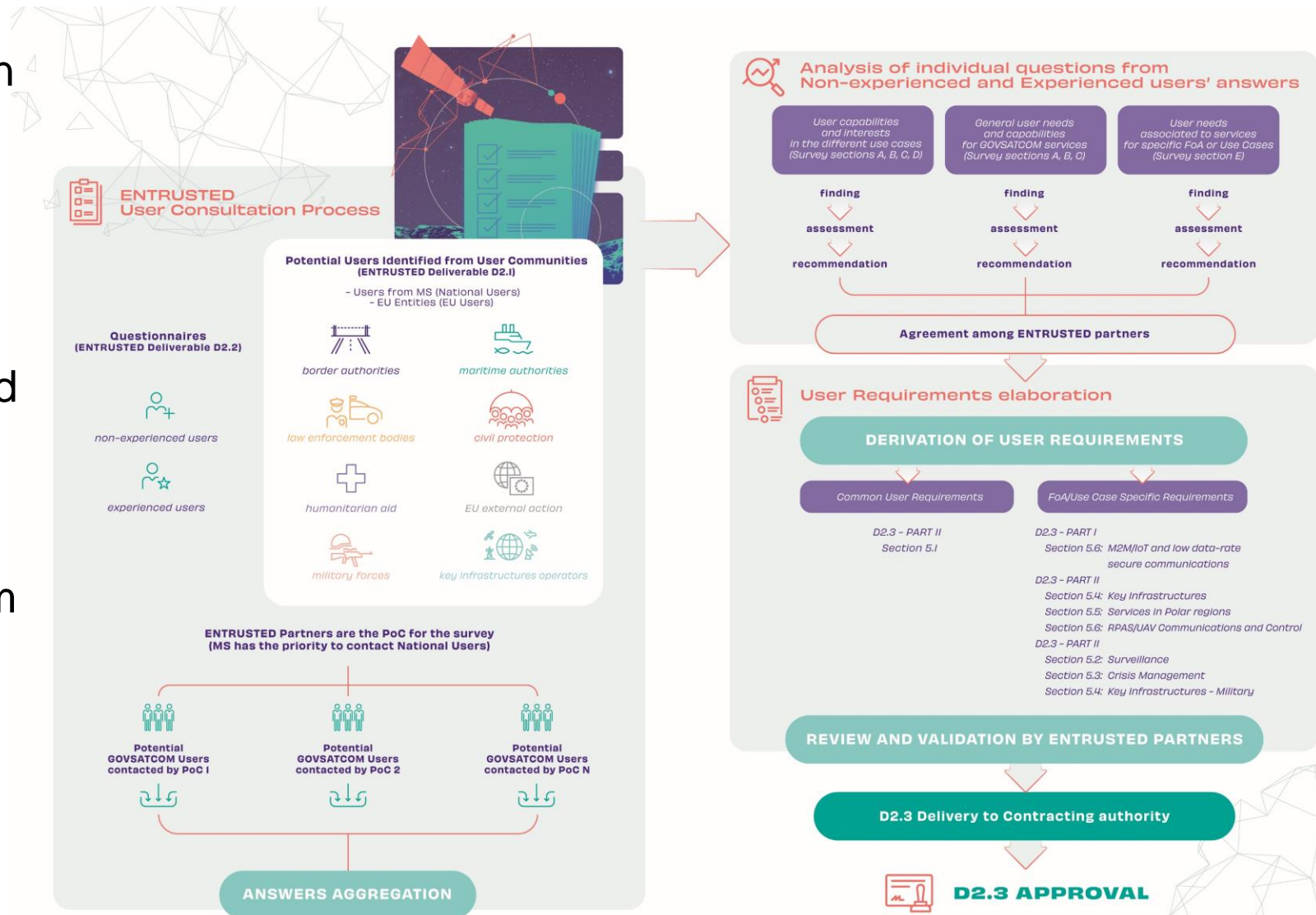
- ENTRUSTED is a H2020 Project focused on providing the user perspective to GOVSATCOM, ensuring that the future secure Satellite Communication services are in line with users needs.
- The user needs will be reflected in a User Requirements Documents, complemented with a R&I Roadmap for the associated user technologies



User Consultation Process

- An EU-wide User Consultation Process has been carried out.
- Main elements of the process include:

1. EU users survey
2. Answers aggregation and analysis
3. Critical assessment incorporating ENTRUSTED consortium expertise
4. Derivation of user requirements and definition of use cases



Survey Participation

ENTRUSTED SURVEY STUDY

OVER **450** PROSPECTIVE GOVSATCOM USERS IDENTIFIED

2 TYPES OF QUESTIONNAIRES ON SECURE SATCOM

- experienced users
- potential users

SURVEY COMMUNICATION CAMPAIGN

- press release
- website
- social media
- newsletter

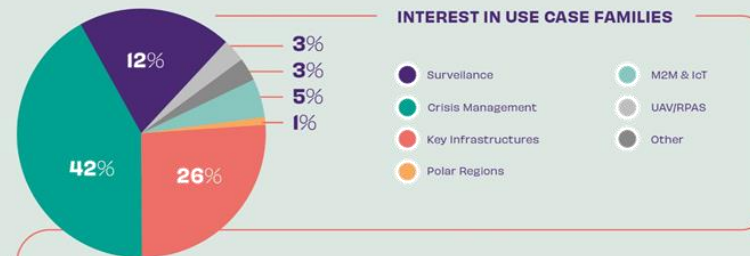
SURVEY COLLECTION (APRIL – JUNE 2021)

- national meetings
- interviews
- email

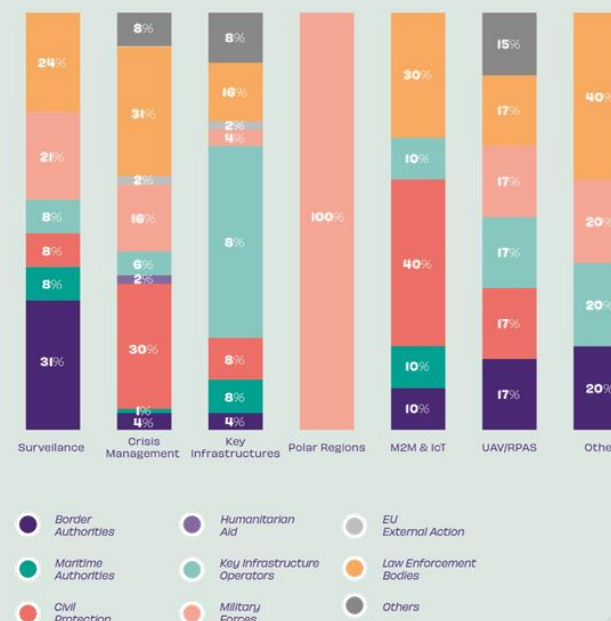
155 QUESTIONNAIRES COLLECTED



SURVEY RESPONDENTS BY USER COMMUNITIES



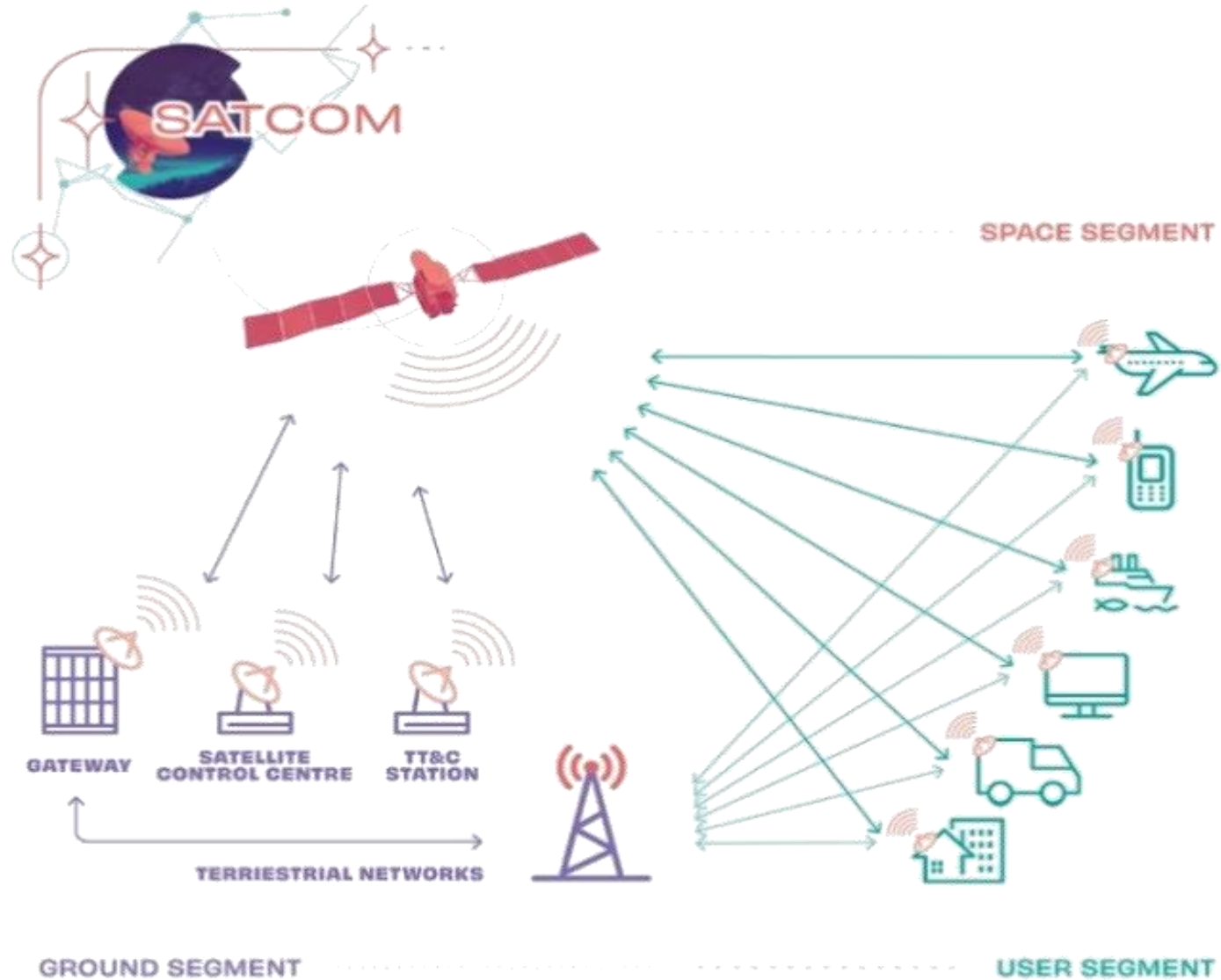
INTEREST IN USE CASE FAMILIES BY USER COMMUNITIES



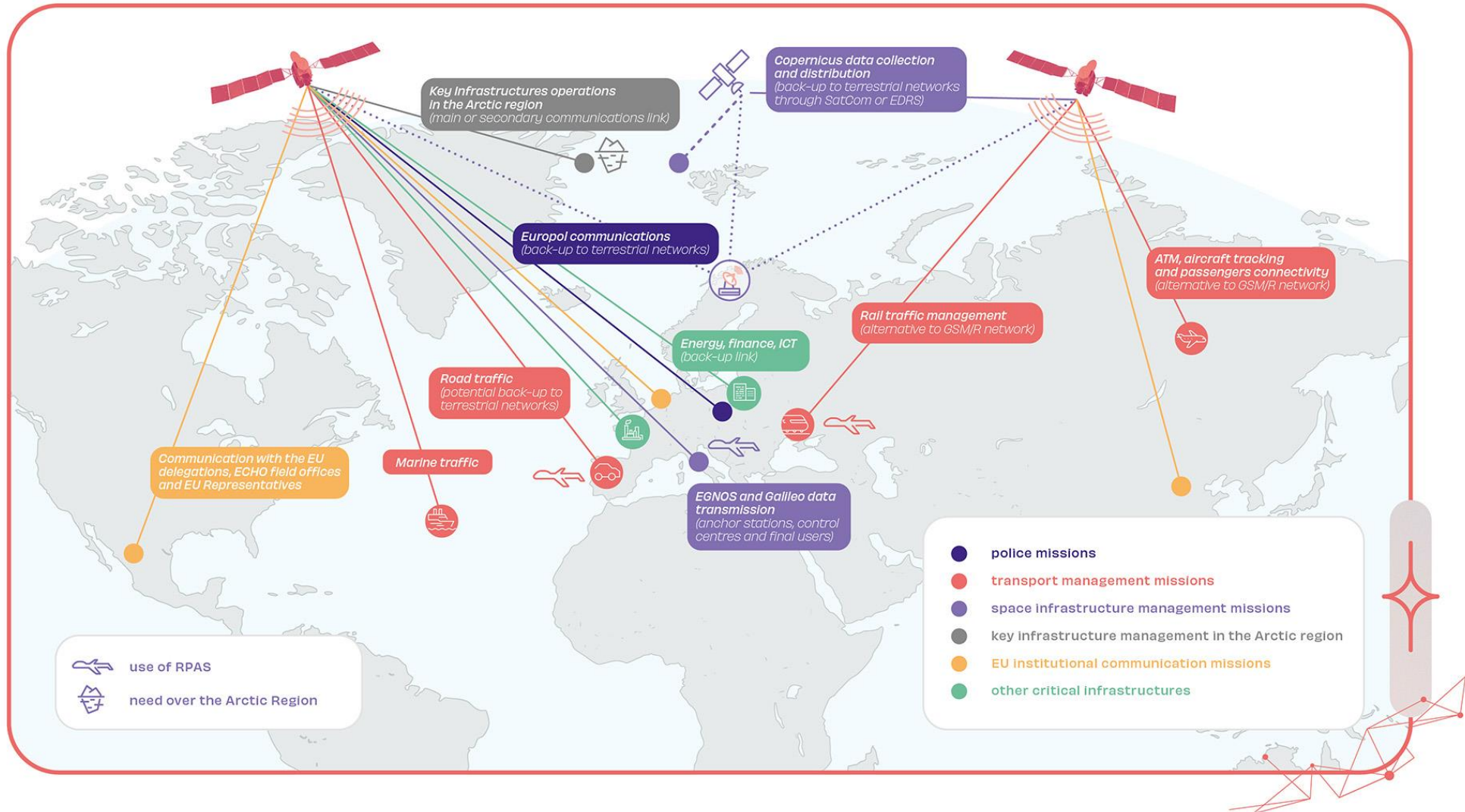
SURVEY RESULTS

user requirements for future EU GOVSATCOM services
state-of-the-art SatCom user technology & future trends
long term R&I road map

Satellite Communication Services



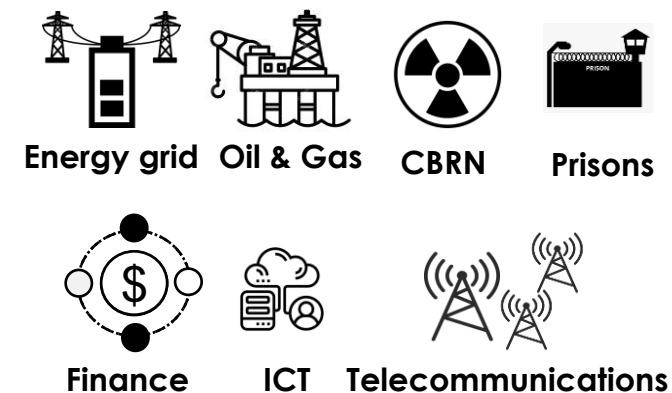
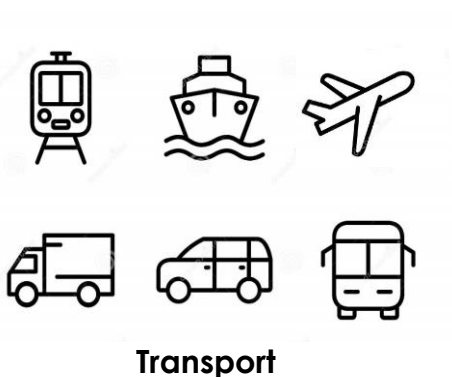
SatCom 4 Critical Infrastructures



Benefits for users involved in Critical Infrastructures

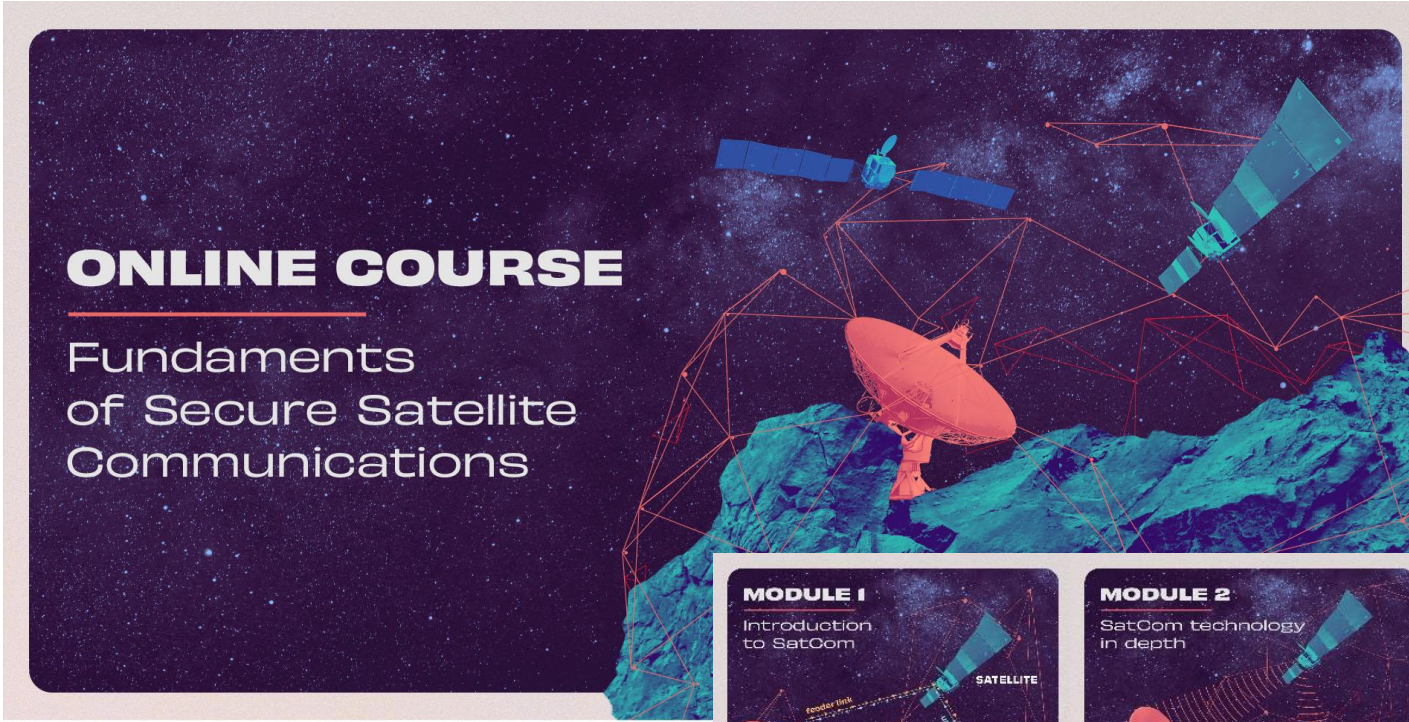
Secure Satellite Communication services can enhance the management and protection of a wide range of Critical Infrastructures, covering functions as:

- Main communication link
- Backup communication link
- Network backhauling services
- Inter-service synergies




Facilitating User Uptake

- A free/online training has been prepared by ENTRUSTED partners to facilitate the user uptake of future services.
- The course focuses on non-experienced final users of secure SatCom, but anyone interested can follow it.
- There is no final exam!!
- Register here:
<https://entrusted.eu/resources/training>



ONLINE COURSE
Fundamentals
of Secure Satellite
Communications



MODULE 1
Introduction to SatCom

MODULE 2
SatCom technology in depth

MODULE 3
SatCom use cases

MODULE 4
GOVSATCOM services for EU Member States

Diagram illustrating the components of a satellite communication system: SATELLITE, GATEWAY, USER TERMINAL, FEEDER LINK, and USER LINK.

Diagram illustrating the components of a satellite communication system: POLAR REGIONS, SURVEILLANCE, MEM & IOT, EPAS / UAV, and ORBITAL INFRASTRUCTURE.

ENTRUSTED Contact



**ENTRUSTED Project Coordinator:
European Union Agency for the Space
Programme** e-mail:
entrusted@euspa.europa.eu

[LinkedIn](#)

[Twitter](#) 

Work Package Leaders:



This project has received funding from the European Union's Horizon 2020 research and innovation programme under grant agreement No. 870330

European Union Satellite Centre © 2021



Thank you!



**Research, Technology Development
and Innovation Unit**
rtdi@satcen.europa.eu