

Novi Dewan,
Digital Health and Healthcare Access

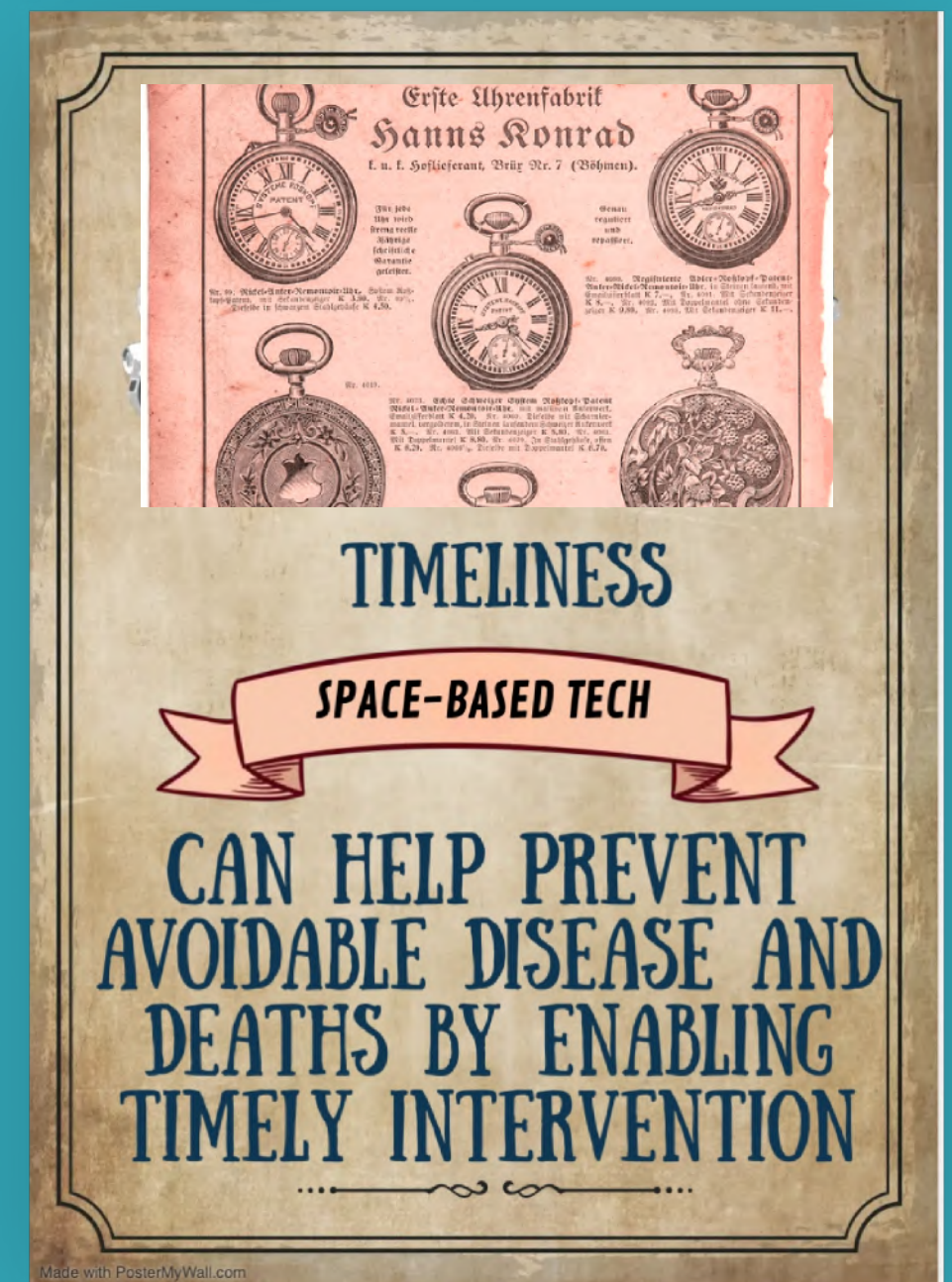
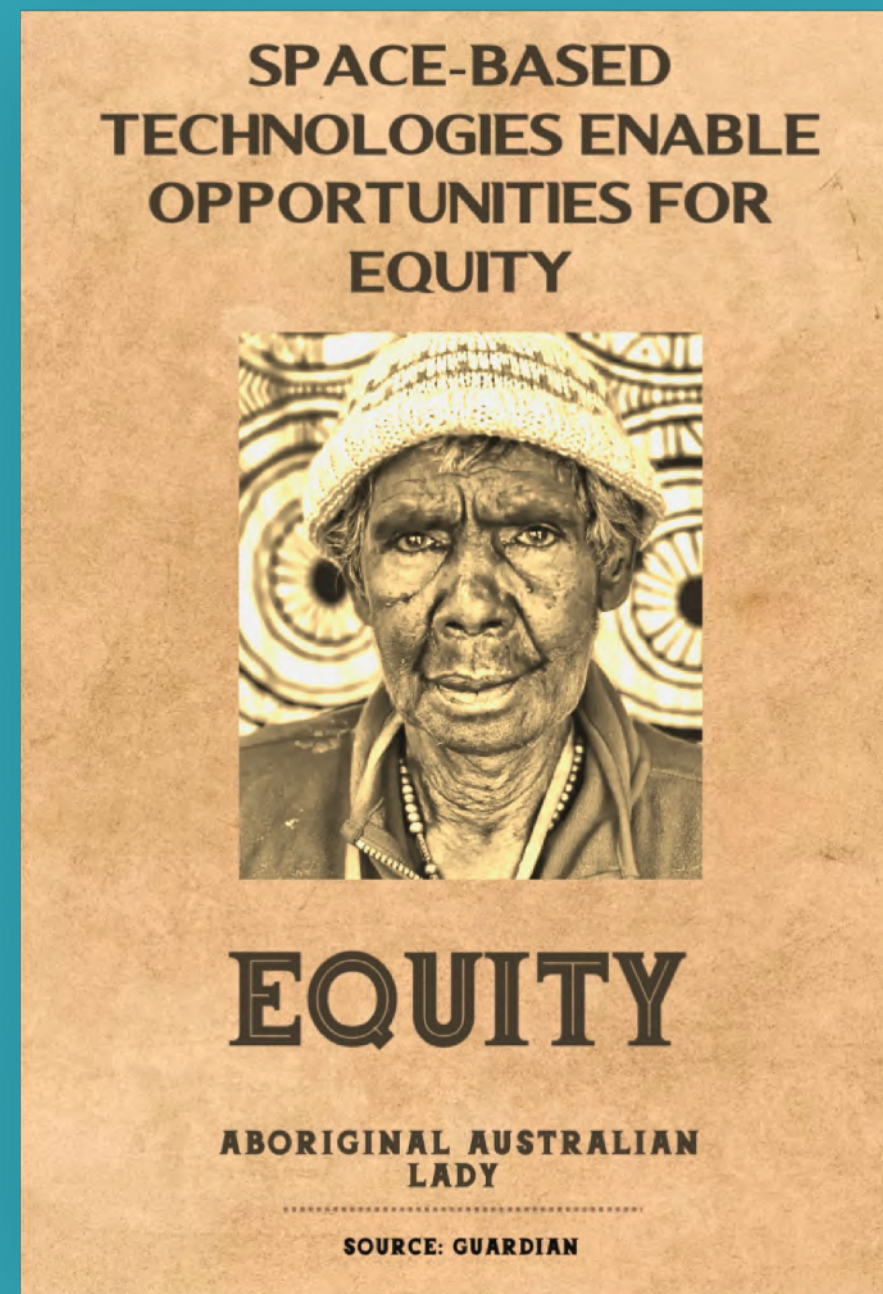
NEREUS, Tuesday, March 7th ▶

Digital Health: The Space against Time

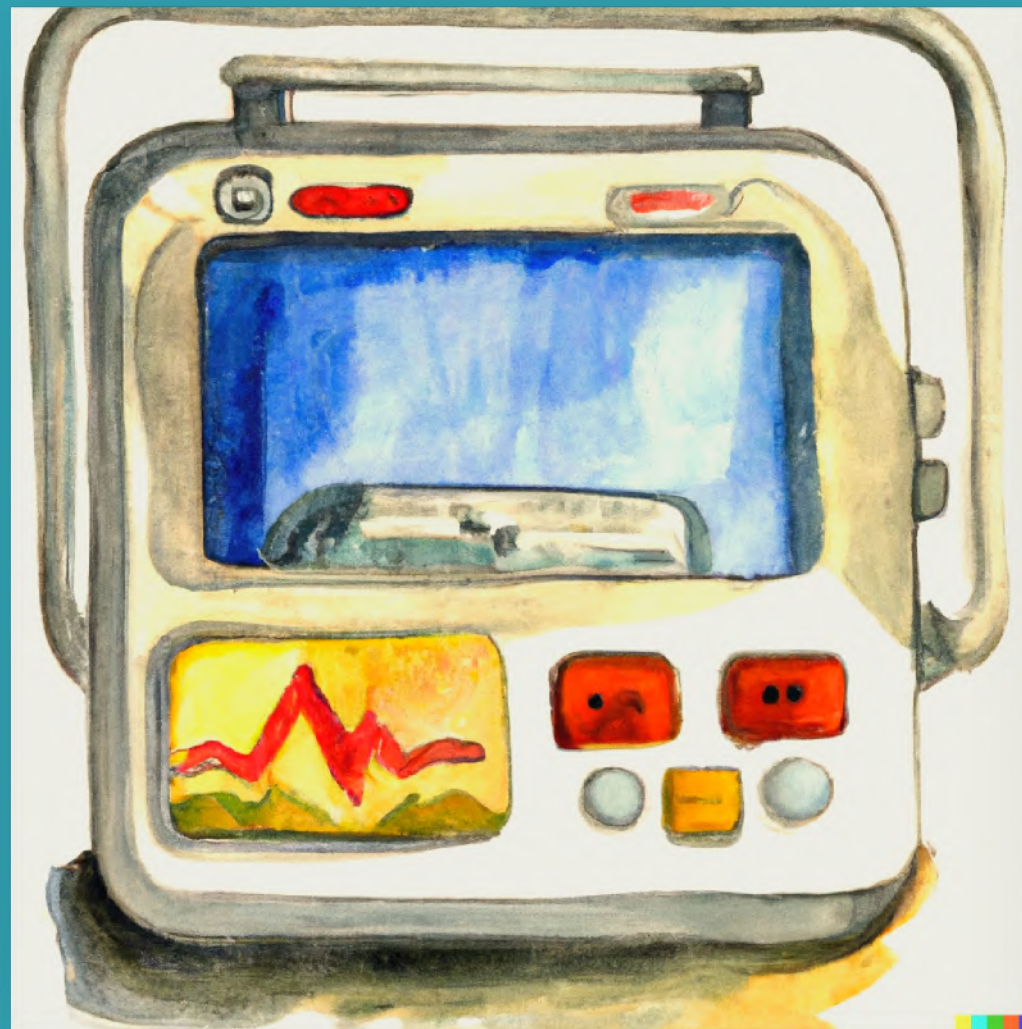
Healthcare Credos



Any technology – Digital or Space – to be an enabler. One that strives to advance the credos for healthcare – **Availability, Accessibility, Equity and Timeliness**



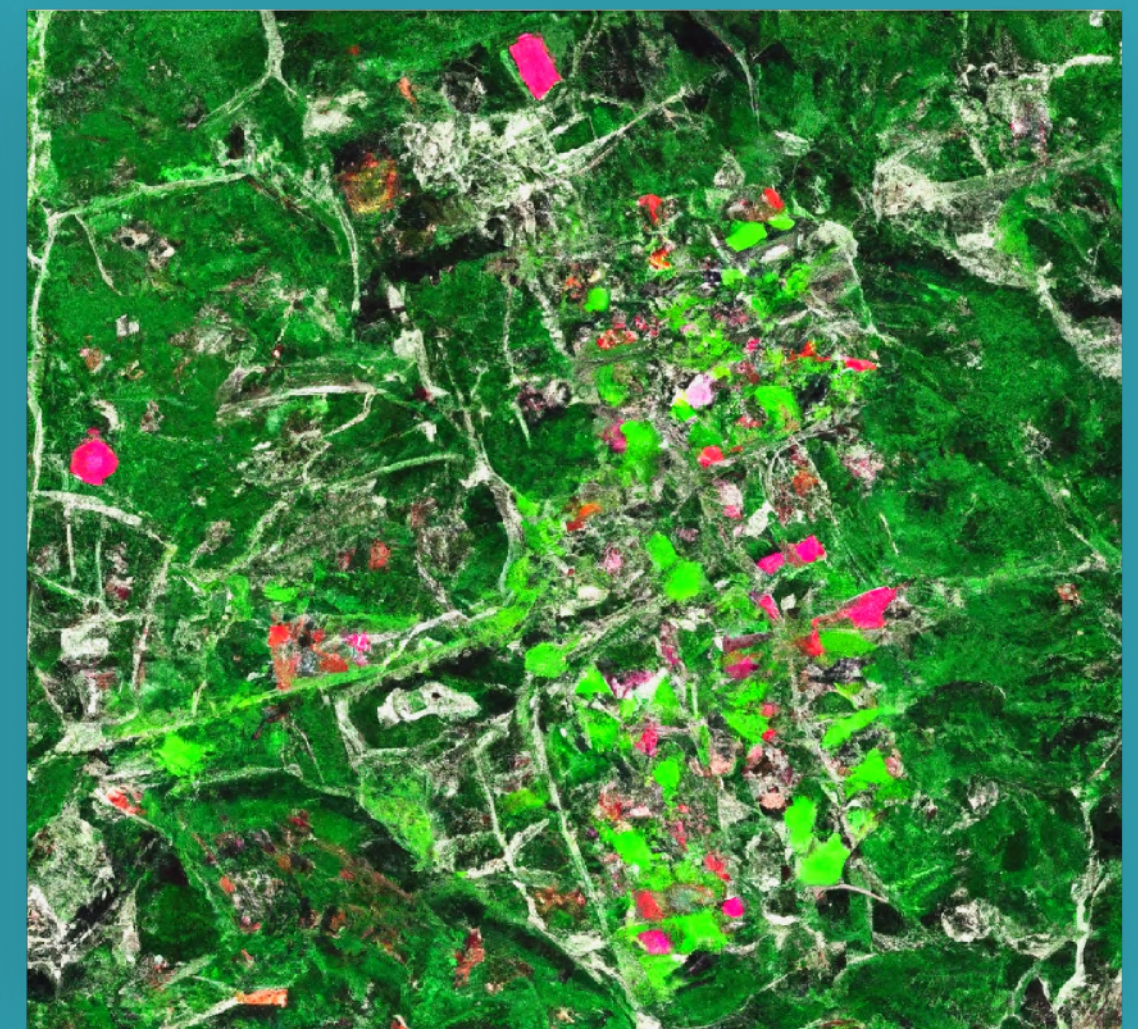
[1] Space Technology in Covid-19



1) Tempus Pro,
a telemedicine Device



2) B-LiFE, a Biological Field
Laboratory



3) CEMS – Copernicus
Emergency Management
Service

Tempus Pro, a Telemedicine device was loaned by the European Astronaut Centre ESA for 3 months to SEM*, Barcelona at the early peak of Covid-19



1] Space and Covid: Tempus Pro



Doctors use Tempus Pro at the European Astronaut Centre in Cologne to assess & communicate astronauts' condition upon return to Earth



- Health Check for Thomas Pesquet with Tempus Pro
- Developed under ESA's Business Application program



Testing and validation at two Argentinian Antarctica bases – Carlini and Belgrano II where -35 degrees, rocky outcrops, 1300kms from South Pole, conditions analogous to moon

1] Space and Covid: Tempus Pro

Emergency responders in Barcelona employ two ESA-provided telemedicine devices in ambulances to triage and treat patients in the golden hour



- Dual-use, light weight, portable
- Ultrasound, ECG, laryngoscopy
- Patient Vitals, heart rate, BP, temperature, respiration rate
- Secure satellite link for communication, iridium satellite antenna (see pic)
- Used in ambulance, 1 nurse, 1 paramedic
- Doctors/senior expertise remote, thus not limited to one vehicle, safe from Covid
- Nurse Borja in SEM working with Tempus says –
 - Simplicity, operability and connectivity
 - Size reduction better for hostile environments
 - Early, timely ECG crucial in saving patient life



B-LiFE, Biological Light Field Laboratory, which was deployed in Guinea during Ebola was deployed in Piedmont Italy during Covid



2] Space and Covid: B-LiFE in Italy

B-LiFE, the Biological Light Field Laboratory deployed in Piedmont, Italy to quickly test first responders for virus & Immunity during Covid-19

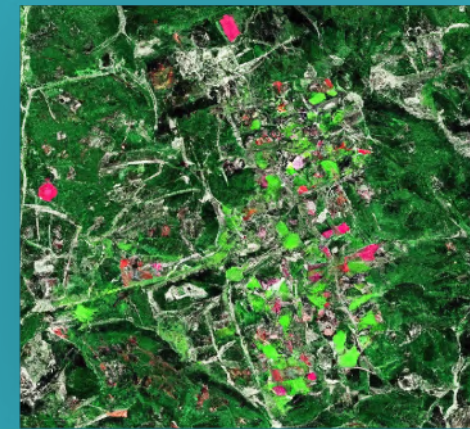


- Quick testing, few hours vs. 24
- Molecular testing, virus and immunity
- Field laboratories critical, **strategically deployed at epicentres of crisis**
- Fast turnaround with collective data analysis onsite
- **Autonomous** from existing infrastructure
 - **Broadband Satellite** communication (field, control teams and experts)
 - **Earth Observation Data** for epidemiological maps
 - **Geo-Location** to track teams, equipment, field samples

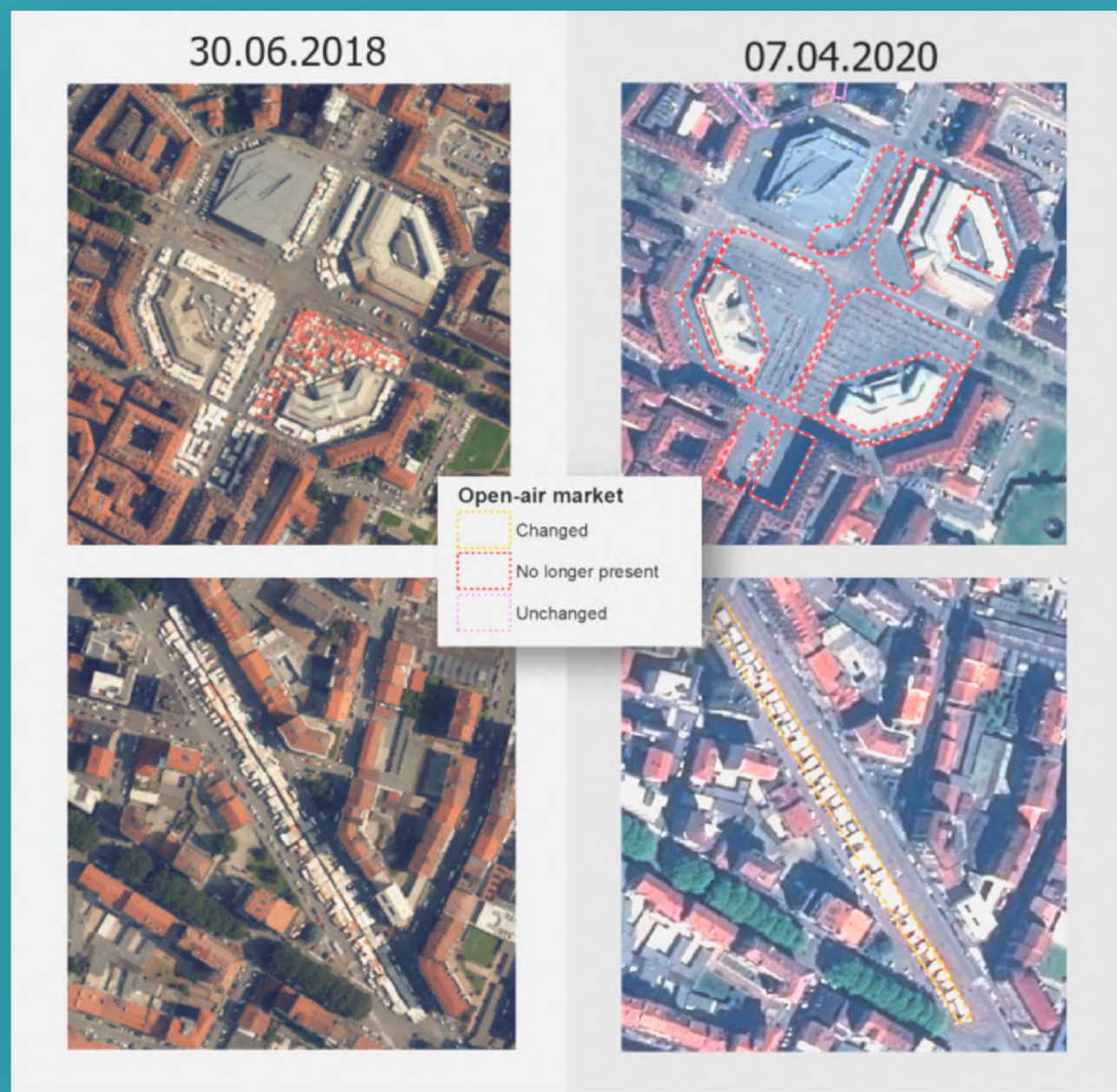
ESA's CEMS, Copernicus Emergency Management Service used in the health infrastructure mapping during Covid-19 in Turin, Italy



3] Space and Covid: CEMS in Italy



CEMS uses satellite imagery and geospatial data for mapping areas during disasters was used to support evidence-based decision-making during Covid-19



- Activated by Italian Civil Protection Department 05.04.20
- 135,000 cases Italy by then
- Scope: Map and observe
 - public gathering places e.g. street markets and parks,
 - temporary health facilities e.g. tents & triage facilities
- Objective: provide evidence to support decision-making

[III] Space Technology: Other Cases



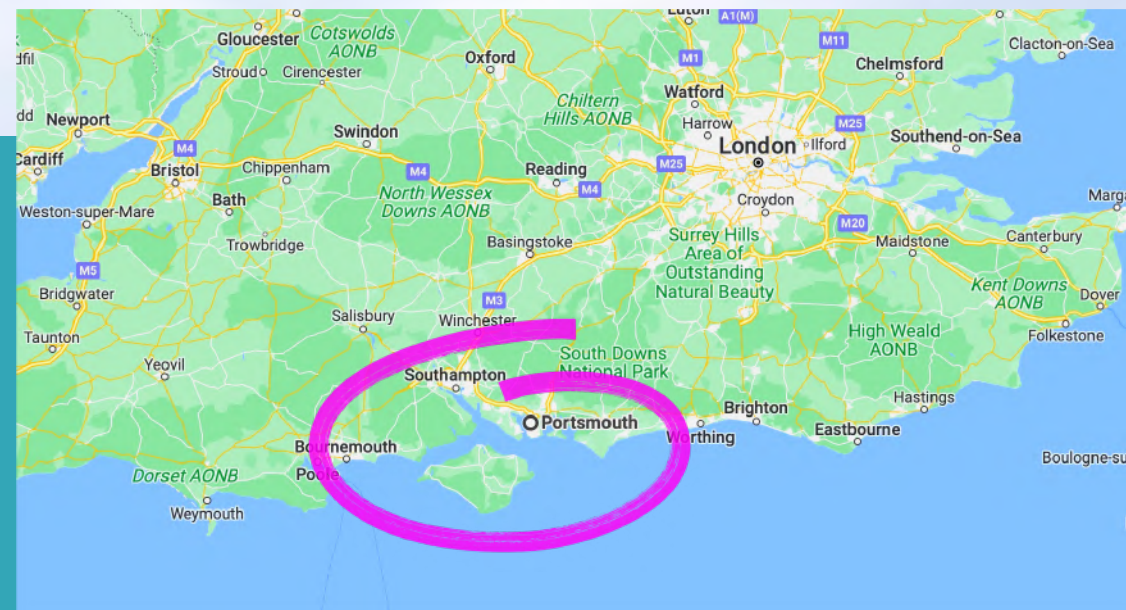
1) Drones to transport chemotherapy, Island of Wight, UK



2) Floating Hospitals in Bangladesh

1] Space for Chemotherapy

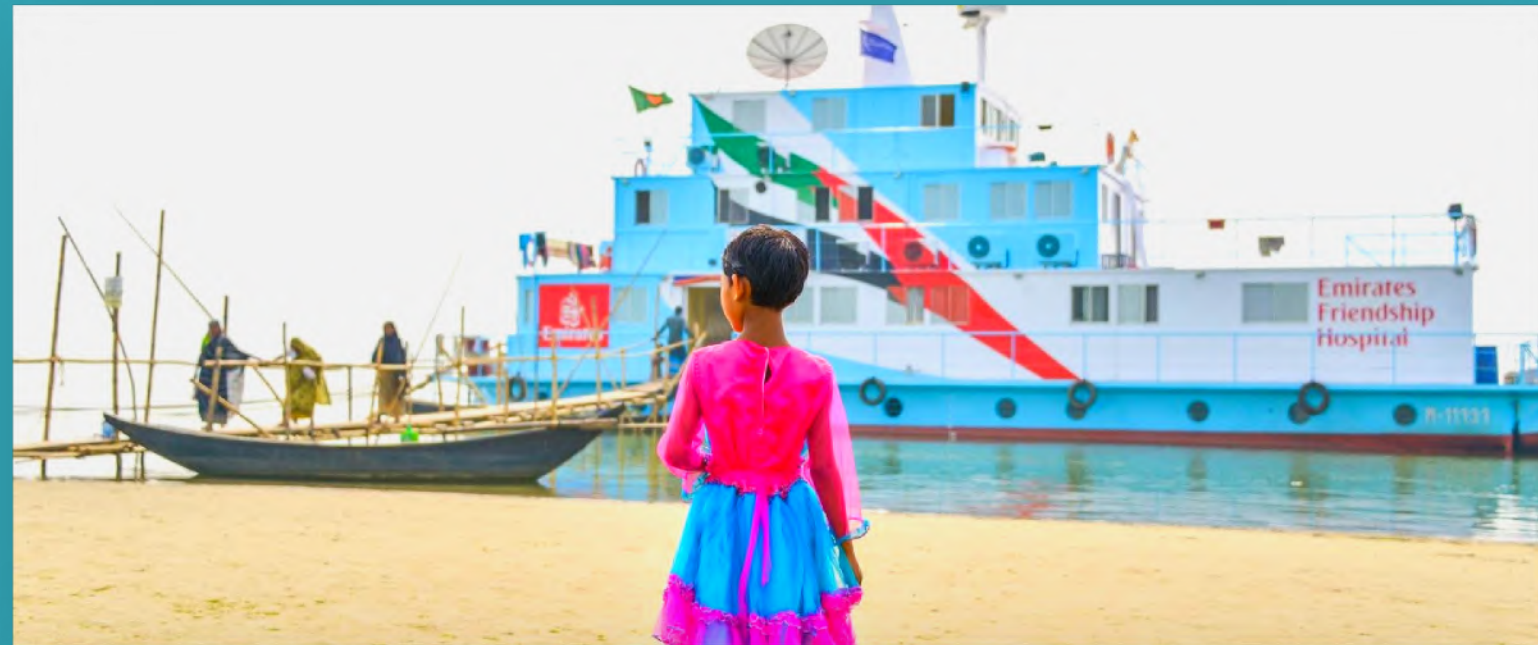
NHS uses electric drones or UAVs, with satellite secure air corridors, satellite enabled GPS to deliver chemotherapy drugs, cutting travel time to 30 min



- Bowel Cancer 2nd deadly cancer in the UK
- Chemotherapy from Queen Alexandra Hospital, Portsmouth to St. Mary's Hospital helipad, Isle of Wight
- Travel time cut from 4 hours (ferry, hovercraft) to 30 min
- Apian, NHS, UK Space Agency Public-Private Partnership
- Electric Drones weigh 85kg, wingspan 5m, carry to 20kg
- Matched with timely screening interventions: 67% up, kits sent home by Sheffield University annually
- Backed by UK Space Agency and ESA secure air corridors and satellite enabled GPS
- Also used for carrying Covid samples, test kits, PPEs

2] Space for Floating Hospitals

Luxembourg Government's SES Satellites provided Maritime VSATs to Friendship NGO for 3 floating hospitals in the riverine of Bangladesh



- SES Satellites deployed 3 Maritime VSATs on 3 Floating Hospitals in Bangladesh
- SES also deployed its satellite-based e-health platform, SATMED aiding medical counselling to marginalised communities
- Telemedicine activities include e-care, e-learning, e-surveillance, e-health management, EMR and digital imaging.
- Success example of Public (SES), Private (Square Informatix, Bangladesh) and NGO (Friendship) partnership

To Impact *Healthcare* Delivery – Truly The Sky or *Space* is the Limit!

