



RÉPUBLIQUE  
FRANÇAISE

*Liberté  
Égalité  
Fraternité*



CEREMA

AVOID THE UNMANAGEABLE AND MANAGE THE UNAVOIDABLE

04/04/2023

Emma Bousquet – [emma.bousquet@cerema.fr](mailto:emma.bousquet@cerema.fr)

# ABOUT CEREMA

- **France's leading** public agency for adapting to climate change and environmental transition
- Over **2500** agents across **26** sites in mainland and overseas France (West Indies and Indian Ocean)
- **€240m** turnover, **80%** funded by the French state
- **Our main clients (excluding central state funding)**
  - **36%** private enterprise
  - **32%** local authorities
  - **18%** French public bodies
  - **Others** (EU projects,...)
- **2021: a new organisation and strategic dynamic with adaptation to climate change at the core of all Cerema's activities**

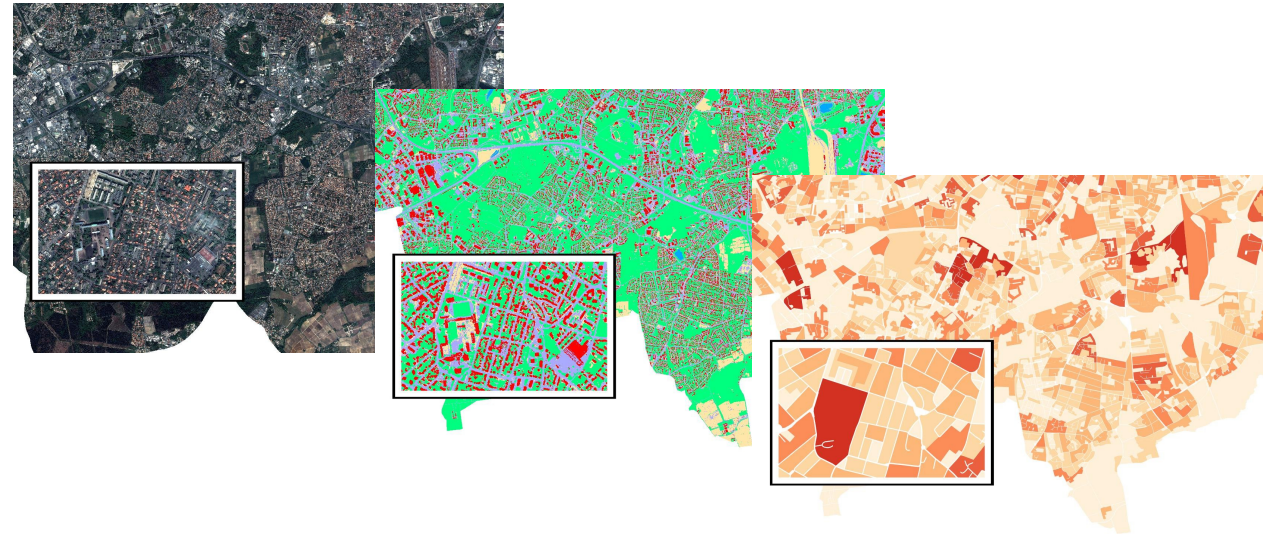
# OUR 6 AREAS OF COMPETENCE



# SATELLITE IMAGERY AT CEREMA

- **Earth Observation group** : based in Toulouse, ~10 people, specialist in satellite image processing and analysis, geomatics

- Access to images
- Image processing
- Production of maps, derived data, etc.



- Applications: urban planning, environment and risks, sea and coast
- Clients: mainly collectivities (municipalities, local authorities, etc.)

# SATELLITE IMAGERY AT CEREMA



RÉPUBLIQUE  
FRANÇAISE  
*Liberté  
Égalité  
Fraternité*



Applisat  
Communauté du satellitaire  
[www.applisat.fr](http://www.applisat.fr)

# THE ROLE OF WOMEN AT CEREMA

- **French public agency:**
  - **Non discrimination policy**
  - **Gender equality**, in particular with regard to equal pay, terms and conditions of employment.
- Cerema employees: **36 %** of women
  - In the Satellite Imagery group: **50 %** of women
- 2021-2022 gender equality plan:
  - Mixity increasing: more women recruitments
  - A better conciliation between professional and personal life
  - A strategy to combat sexual and sexist violence



For more information :

[www.cerema.fr/en](http://www.cerema.fr/en)



Or Contact us at :

[international@cerema.fr](mailto:international@cerema.fr)