

Project Partners



REGIONE DEL VENETO



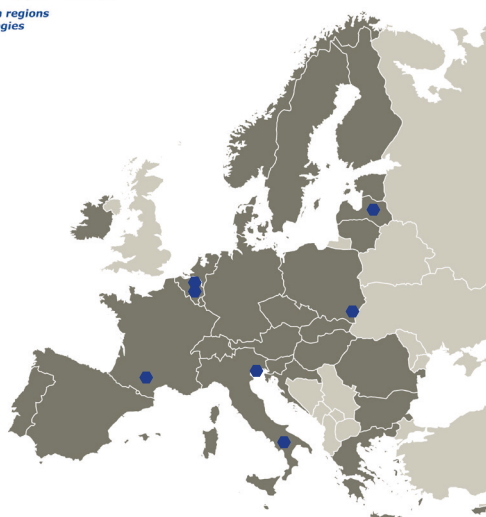
GOVERNO DOS AÇORES



RIGA CITY COUNCIL
CITY DEVELOPMENT
DEPARTMENT



SviluppoBasilicata



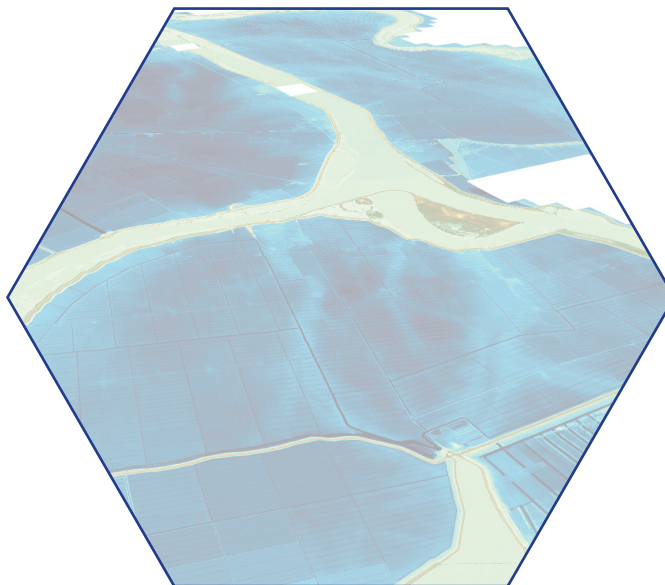
www.interregeurope.eu/satsdifaction



<https://www.linkedin.com/in/satsdifaction/>



<https://twitter.com/SATSDIFACTION>



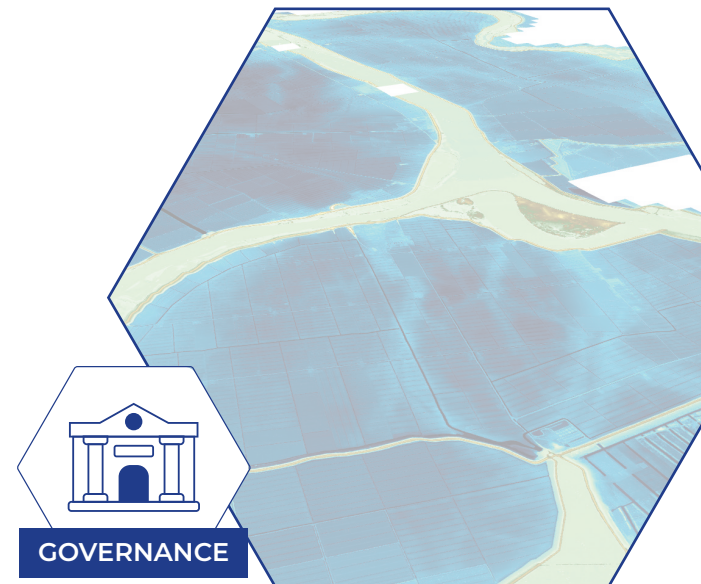
Co-funded by the European Union

Interreg
Europe



Co-funded by
the European Union

SATSDIFACTION



GOVERNANCE

Satellite data and
Spatial Data
Infrastructures for
an evidence-based
regional
governance



GOVERNANCE



**59 ORGANISATIONS
COOPERATING ACROSS
BORDERS**



**€ 1.38
MILLION
EU FUNDING**



**01 MAR 2023
31 MAY 2027**



**10 INTERREGIONAL
EVENTS TO BE
ORGANIZED**



**21 GOOD PRACTICES TO
BE IDENTIFIED**

Project summary

The integration of Satellite Data in local and regional SDIs (Spatial Data Infrastructures) is of strategic importance and with great potential to support government and decision making at subnational level, providing unrivaled information for disaster management, climate change observations, weather forecast, etc.

However, due to the lack of competence - at organizational and individual level, as well as low awareness among political decision makers, the uptake of existing satellite data and services is not being utilized, and their integration in added-value services for regional and local governments is far from optimal.

The SATSDIFACTION project aims at promoting the exchange and transfer of experiences related to the use of Satellite Data in local and regional Spatial Data Infrastructures as a mean to improve the performance of regional policy instruments, eventually leading to a better, evidence-based governance of the regional territory.

DOMAIN OF SATELLITE DATA APPLICATION (I.E.: POLICY INSTRUMENT)

Veneto Region	Land management
Podkarpackie Region	Renewable energy sources
Azores Region	Energy Transition
Sviluppo Basilicata	Training & Education
ISSeP - Wallonia	Flood Prevention
Riga Municipality	Urban sustainable development
Occitanie Region	Climate change adaptation