

AUVERGNE-RHÔNE-ALPES ENERGY ENVIRONMENT AGENCY



**Auvergne
Rhône-Alpes**
Énergie Environnement

UNRAVELING THE IMPACT OF EUROPEAN SPACE EDUCATION ON FUTURE LEADERS AND SUSTAINABLE EXPLORATION

Avec le soutien de :



La Région
Auvergne-Rhône-Alpes



About Auvergne-Rhône-Alpes region

7.6 million inhabitants:

- 12% of French population
- 78% of population living in urban area
- 4 metropolitan areas > 200 000
- 1/3 population is less than 25Y
- 4 100 municipalities

230 billion €: 12% French GDP

- Tourism (172 ski resorts) and Industry

Energy and Environment

- 67% of mountain (or high) areas
- 9 Nature regional parks
- 40% of territory covered by forests
- Exporting energy, 23% RES



About the agency AURA-EE

A non profit organization

80 members : Region, public authorities, energy companies, NGOs..

Fields of expertise:

- Sustainable energies
- Climate mitigation and adaptation (NBS)
- Sustainable development
- Waste management
- Environment protection



900
partners



15
on-going
EU projects



45
years



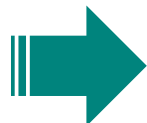
3,4
M€ annual turn over



45
employees



**Auvergne
Rhône-Alpes**
Énergie Environnement



www.en.auvergnerhonealpes-ee.fr

About the agency AURA-EE

Main goal: To promote, inform and support sustainable development regional and local policies and projects

Providing 3 main types of services to territories in transition:



Renewable energies



Climate



Energy efficiency



Inclusive mobility



Public procurement and circular economy



New business models



Auvergne Rhône-Alpes
Énergie Environnement

Our interests in Spatial Data

WHAT

- **Renewable energy potentials:**
 - solar pv
 - **solar thermal (example below)**
 - parking lots
 - brownfields, road closures...

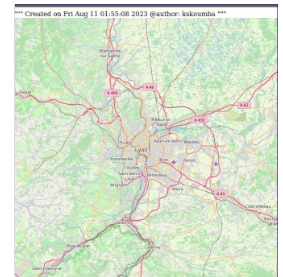
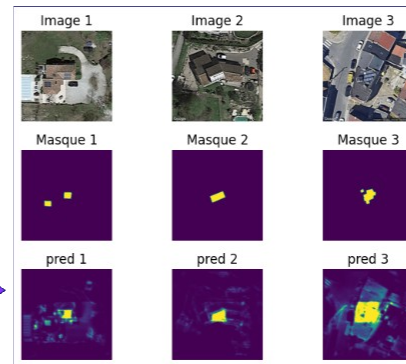


ergne
rhône-Alpes
Énergie Environnement



```

Image RGB      Image Binaire
Input: (256,256,3)  Output: (256,256,1)
-----
| Encoder | | Decoder |
-----
(128,128,64) (128,128,64)
| Conv 2D | | Conv 2D |
-----
(64,64,128) (64,64,128)
| concat | | + ip |
-----
(32,32,512) (32,32,512)
| + dom | | + dom |
-----
(16,16,512)
| + dom |
-----
|>>> Sortie |<<<
-----
Méthode de U-net
    
```



Standard	Standard	Standard
1	Centroid_x	y
2	859412.7597253079	6511609.303551617
3	833788.3094181609	6543772.134313125
4	833961.9381847354	6543811.48111984
5	832668.6442865784	6544055.102988341
6	832774.2875425777	6544498.22488512
7	843698.6199660354	6519796.47501493
8	847878.6895663845	6528334.339738985

ORCAE

ORCAE

Observatoire régional climat air
énergie Auvergne-Rhône-Alpes

Observatoire régional
climat air énergie
Auvergne-Rhône-Alpes

- ➔ Regional key figures
- ➔ Climate, air and energy profiles and raw data for all regions in the region
- ➔ Climate indicators by « département »

Co-hosted with
Atmo, Météo
France,
Cerema


Recherche de données et indicateurs

Choisissez un critère de recherche

Par territoire

CA de l'Ouest Rhodanien

Rechercher



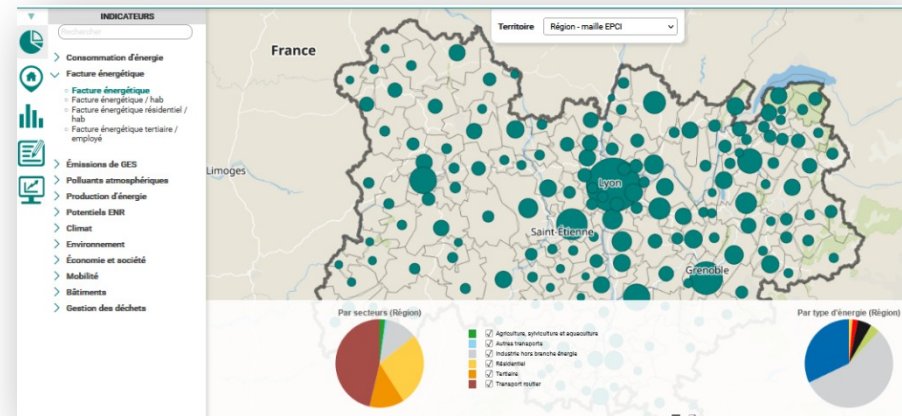
TerriSTORY

TerriSTORY

Outil partenarial d'aide au pilotage de la transition des territoires

- ➔ Multi-thematic indicators at different territorial levels
- ➔ Transition trajectories
- ➔ Simulation of environmental and socio-economic impacts
 - ➔ Development of territorial strategies
 - ➔ Dashboards to manage regional transition

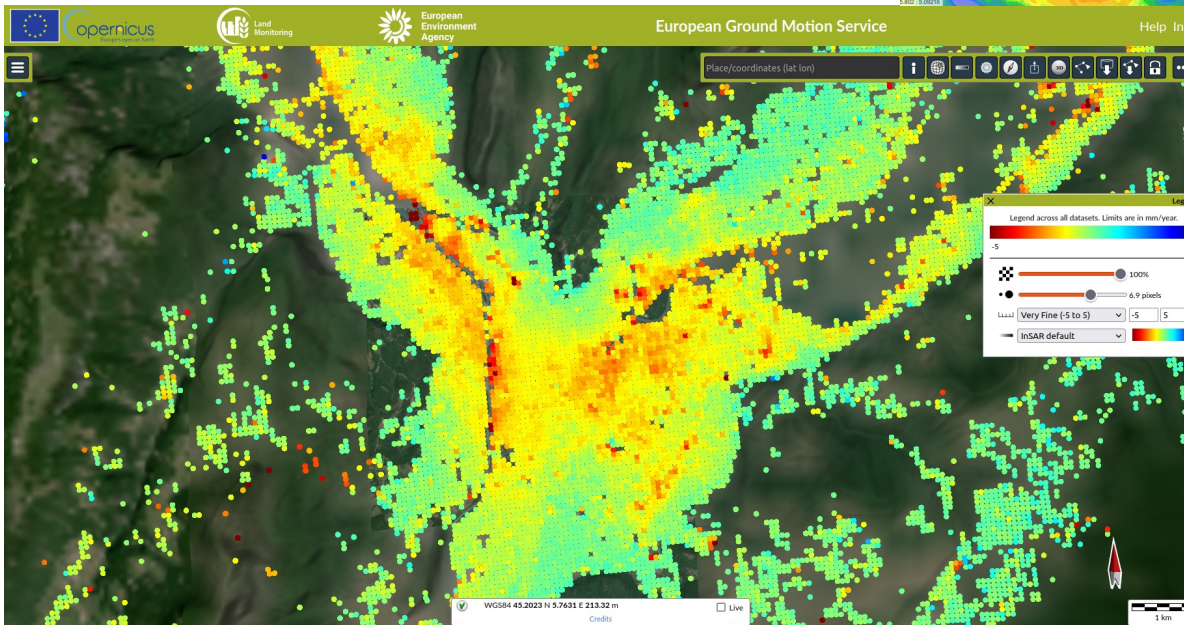
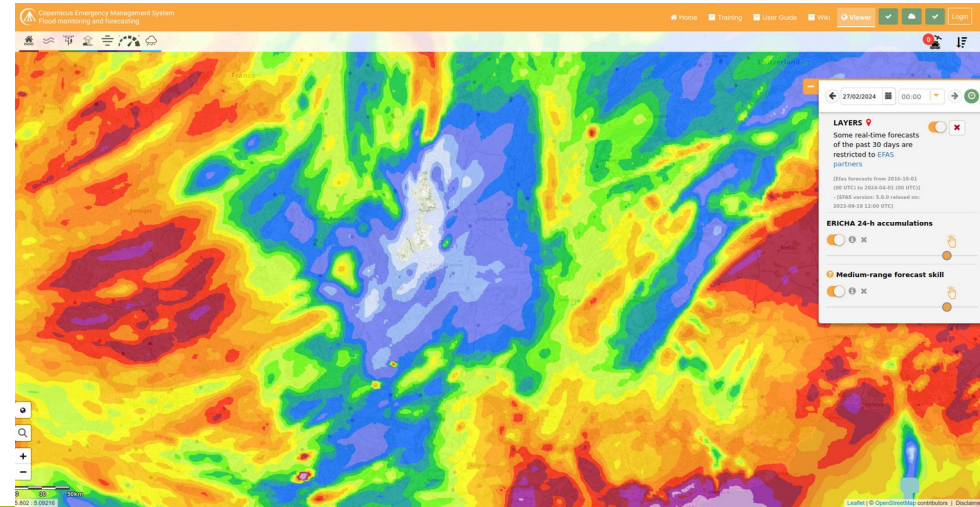
A partnership tool to help manage the **transition of territories**, co-constructed with territories



Our interests in Spatial Data

WHAT

- **Climate risks:**
 - build some indicators on natural risks
 - identify the potential areas
 - identify the level of risk



Source:
https://www.efas.eu/efas_frontend/#/home

Source: <https://egms.land.copernicus.eu/>

ClimaSTORY

- ➔ A fun and educational way to encourage collective reflection
- ➔ Considered from the angle of solutions and cooperation around 5 themes of economic activity
- ➔ Local authorities: we'll put you in touch with a ClimaSTORY®-trained facilitator.



Our interests in Spatial Data

WHAT

- **Renewable energy potentials:**
 - solar pv
 - solar thermal
 - parking lots
 - brownfields, road closures...
- **Climate risks:**
 - build some indicators on natural risks
 - identify the potential areas
 - identify the level of risk
- **Biodiversity**
- **Land-use:** potential for large power plants ?

WHAT FOR

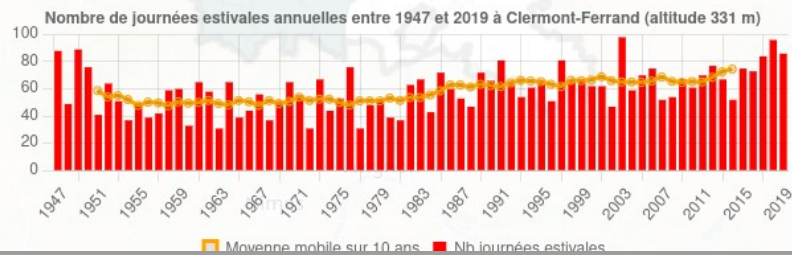
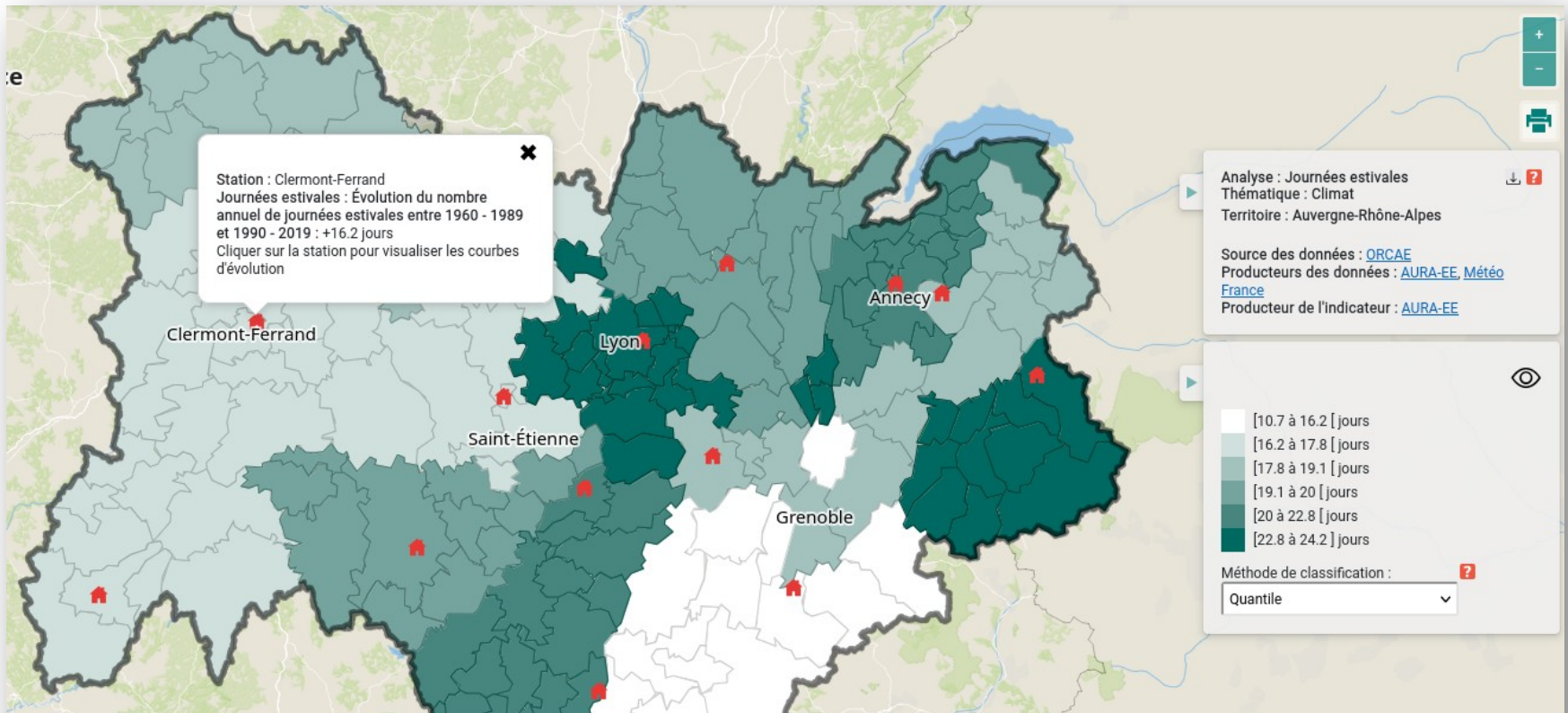


Observatoire régional
climat air énergie
Auvergne-Rhône-Alpes

*And other future tools to
support territories!*

TerriSTORY

Data-visualization tool



Thank you for your attention

Matthieu Denoux, PhD

Head of Digital Services

Auvergne Rhône-Alpes Énergie Environnement

matthieu.denoux@auvergnerhonealpes-ee.fr

